



# Annual Statistical Report 2005

based on data from CARE

## SAFETYNET

Building the European Road Safety Observatory

Workpackage 1 – Task 3

Deliverable No 2:

---

Authors:

KfV Austria  
NTUA Greece  
SWOV The Netherlands  
TRL United Kingdom

Workpackage Leader:

NTUA Greece

Task Leader:

KfV Austria

Contract Number:

TREN-04-FP6TR-  
SI2.395465/506723

Project Number:

1.3.2.

Acronym:

SAFETYNET

Version:

No2

Date:

31/10/2005

## CONTENTS

1	Introduction.....	2
1.1	The CARE Database .....	2
1.2	Note to the Reader .....	3
2	Overview – major issues (figures).....	6
2.1	EU25 – Developments (includes other database than CARE).....	6
2.2	Interesting Details .....	8
3	Time Series – last 10 years.....	10
3.1	General time series .....	10
3.2	Mode of transport related time series.....	14
3.3	Person age, and gender related time series .....	19
4	Fatalities 2003.....	26
4.1	People involved .....	26
4.1.1	Age and gender of persons .....	26
4.1.2	Age of persons by mode of transport .....	27
4.2	Modes of transport.....	30
4.2.1	Mode of transport by age of persons.....	30
4.2.2	Mode of transport by type of area.....	35
4.3	Accident characteristics.....	36
4.3.1	Various periods of time (month, day of week, hour of day).....	36
4.3.2	Type of area/road .....	42
4.3.3	Type of junction .....	44
4.3.4	Weather conditions .....	45
5	Fatal accidents 2003.....	46
5.1	Various periods of time (month, day of week, hour of day).....	46
5.2	Type of area/road .....	48
5.3	Type of junction .....	49
5.4	Weather conditions.....	50
6	Glossary .....	51
7	List of tables and figures .....	59

# 1 Introduction

## 1.1 The CARE Database

### Community database on Accidents on the Roads in Europe

Road traffic accidents in the Member States of the European Union annually claim about 36.000 lives and leave more than 1.7 million people injured, representing estimated costs of 160 billion euro. Since 1984, a large number of measures to reduce road accidents have been taken at the Community level. Along with these measures, the Council adopted a Decision on 30 November 1993 on the creation of a Community database on road accidents (93/704/EC)<sup>1</sup>, the CARE project.

It was commonly agreed that such a database at the Community level would make it possible to identify and quantify road safety problems, evaluate the efficiency of road safety measures, determine the relevance of Community actions and facilitate the exchange of experience in this field. After a pilot phase of about 3 years, the Council endorsed the "Report from the Commission on the progress with the project and its future prospects" (COM(97) 238 final).

CARE is a Community database on road accidents resulting in death or injury (no statistics on damage only accidents). The major difference between CARE and most other existing international databases is the high level of disaggregation, i.e. CARE is based on detailed data of individual accidents as collected by the Member States. This structure allows for maximum flexibility and potential with regard to analyzing the information contained in the system and opens up a whole set of new possibilities in the field of accident analysis.

National data sets are integrated into the CARE database in their original national structure and definitions, with confidential data blanked out. However, transformation rules are implemented in the CARE database in order to increase data compatibility and thus enhance the functioning of the system.

The process of improving "homogenization" of accident data within CARE is underway. In the meantime, the inherent incompatibility of national accident data remains a source of possible misinterpretation when performing comparative analyses at international level. Therefore, on-line access to the CARE database is currently restricted to expert users. The summary statistical tables contained here provide an overview of EU road accident data.

---

<sup>1</sup> OJ No 329, 30.12.1993, p. 63.

## 1.2 Note to the Reader

This Annual Statistical Report provides the basic characteristics of road accidents in the 14 member states of the European Union (except Germany) for the period 1994-2003, on the basis of data collected and processed in the CARE database, the Community Road Accident Database with disaggregate data (Council Decision EEC 93/704 final).

The period 1994-2003 has been used in order to maximize the sample of data. However, data for the some countries and corresponding years were not yet available in the CARE database at the date of drafting this report.

Data available in the CARE database (x) and use in this report x

Code	Country	1991	1992	1993	1994	1995	1996	1997	1998	1999	2000	2001	2002	2003	2004
BE	Belgium	x	x	x	x	x	x	x	x	x	x	x			
CZ	Czech Republic														
DK	Denmark	x	x	x	x	x	x	x	x	x	x	x	x	x	x
DE	Germany														
EE	Estonia														
EL	Greece	x	x	x	x	x	x	x	x	x	x	x	x	x	
ES	Spain	x	x	x	x	x	x	x	x	x	x	x	x	x	
FR	France	x	x	x	x	x	x	x	x	x	x	x	x	x	x
IE	Ireland	x	x	x	x	x	x	x	x	x	x	x	x	x	
IT	Italy	x	x	x	x	x	x	x	x						
CY	Cyprus														
LV	Latvia														
LT	Lithuania														
LU	Luxembourg	x	x	x	x	x	x	x	x	x	x	x	x		
HU	Hungary														
MT	Malta														
NL	Netherlands	x	x	x	x	x	x	x	x	x	x	x	x	x	
AT	Austria	x	x	x	x	x	x	x	x	x	x	x	x	x	x
PO	Poland														
PT	Portugal	x	x	x	x	x	x	x	x	x	x	x	x	x	
SL	Slovenia														
SK	Slovakia														
FI	Finland	x	x	x	x	x	x	x	x	x	x	x	x	x	
SW	Sweden	x	x	x	x	x	x	x	x	x	x	x	x		
UK	United Kingdom (GB+NI)	x	x	x	x	x	x	x	x	x	x	x	x		

The reader should be aware of the following remarks concerning the contents of this Annual Statistical Report:

- It should be taken into account that analysis and comparisons of the numbers of accidents and injuries are not always possible, as different definitions exist in each EU Member State.
- Fatality data are compatible and use common definitions as a result of the CAREPLUS project. Corrective factors have been applied to comply with the international definition of persons killed within 30 days after an accident. ([http://europa.eu.int/comm/transport/care/glossary/index\\_en.htm](http://europa.eu.int/comm/transport/care/glossary/index_en.htm) for details).
- On fatal accidents data, no corrective factors have been applied to comply with the international definition of persons killed within 30 days.
- EU percentages are weighted percentages.
- Minor differences in totals are due to the rounding of numbers.
- "Unknown" values are not mentioned, but they are taken into account in totals.
- The EU totals for all persons killed are not necessarily the sum of each sub-division of these persons, given that there are no data available for all sub-divisions and all countries. Corresponding percentages refer to the available data.
- Partial or complete reproduction of these statistics is permitted if the source is mentioned and accompanied with the present remarks.
- The basic characteristics of fatal road accidents in the EU member states have been selected as those with usefulness for road accident analysis and availability of compatible form for all or most of the EU countries (results of CAREPLUS project on making accident data comparable). More characteristics will be available with the introduction of the CAREPLUS 2 project. More precisely, the basic characteristics of fatal road accidents refer to:
  - person class** (driver, passenger, pedestrian)
  - person killed age group**
  - person killed sex** (male, female)
  - area type** (inside or outside urban area)
  - motorway** (yes or no)
  - junction type** (crossroad, level crossing, not at a junction, roundabout, T or Y junction)
  - weather conditions** (dry, fog or mist, rain, snow/sleet/hail, strong wind)
  - modes of transport - vehicle group** (agricultural tractor, bus or coach (>8 seats), car or taxi, heavy goods vehicles, lorry under 3.5 tons, pedal cycle, moped, motor cycle, other)
  - month** (January to December)
  - day of the week** (Monday to Sunday)
  - hour** (0-24)
- This report is amongst the first outcomes of the CARE database. The validation of the CARE system is not yet finished and minor amendments to the figures presented might be necessary. Comments can be addressed to [safetynet@lboro.ac.at](mailto:safetynet@lboro.ac.at)

## Disclaimer

The information in this document is provided as it is and no guarantee or warranty is given that the information is fit for any particular purpose. Therefore, the reader uses the information at their own risk and liability.

## For more information

Traffic Safety Basic Fact Sheets available from the European Commission concern:

- Children (Aged <16)
- Young People (Aged 16-24)
- Elderly persons
- Pedestrians
- Motorcycles and Mopeds
- Car-Occupants
- Motorways

For more information about the project "SafetyNet" which is co-financed by the European Commission, Directorate-General Energy and Transport please contact <http://safetynet.swov.nl/>.

### Authors:

Stefan Hoeglinger	KfV, Austria
Niels Bos	SWOV, The Netherlands
George Yannis and Petros Evgenikos	NTUA, Greece
Jeremy Broughton and Brian Lawton	TRL, United Kingdom

## 2 Overview – major issues (figures)

### 2.1 EU25 – Developments (includes other database than CARE)

Figure 1: Annual number of fatalities, injury accidents and injured people (EU-25)

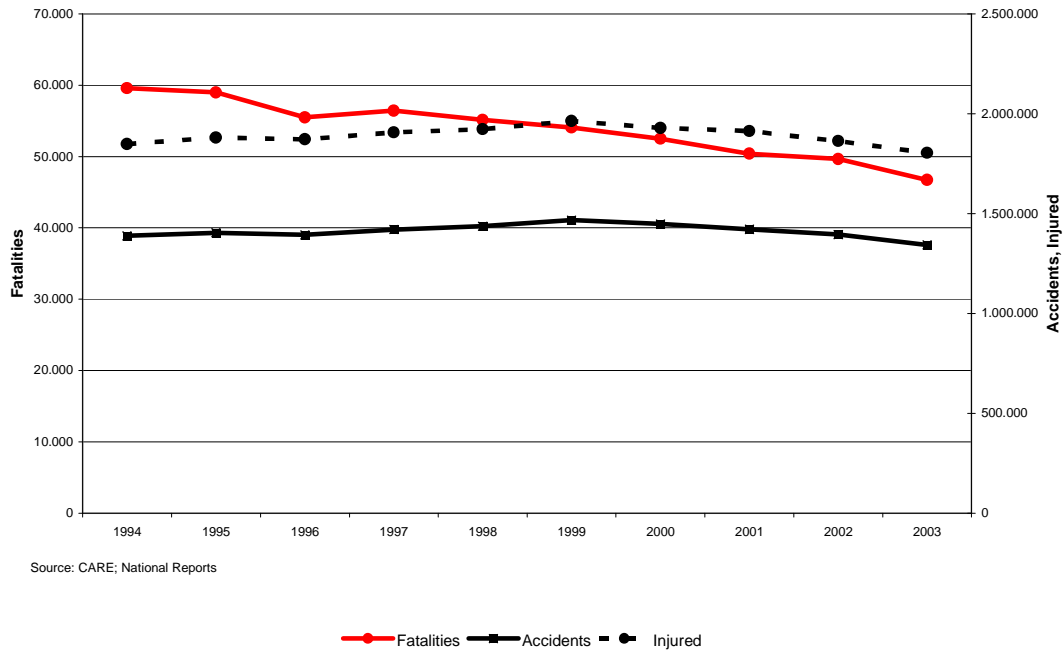
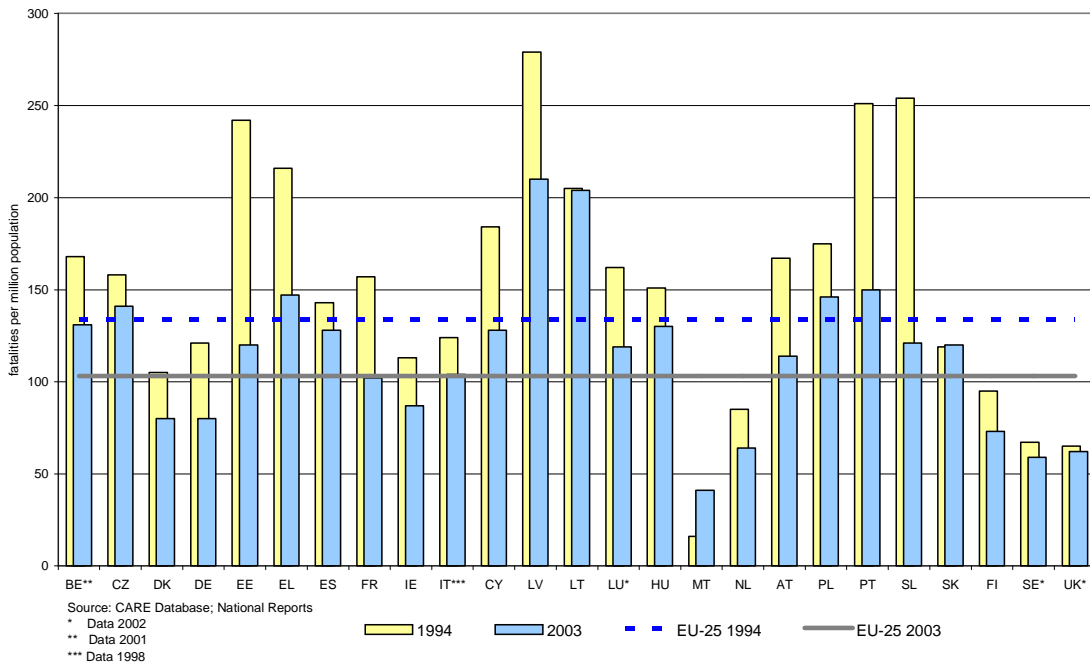
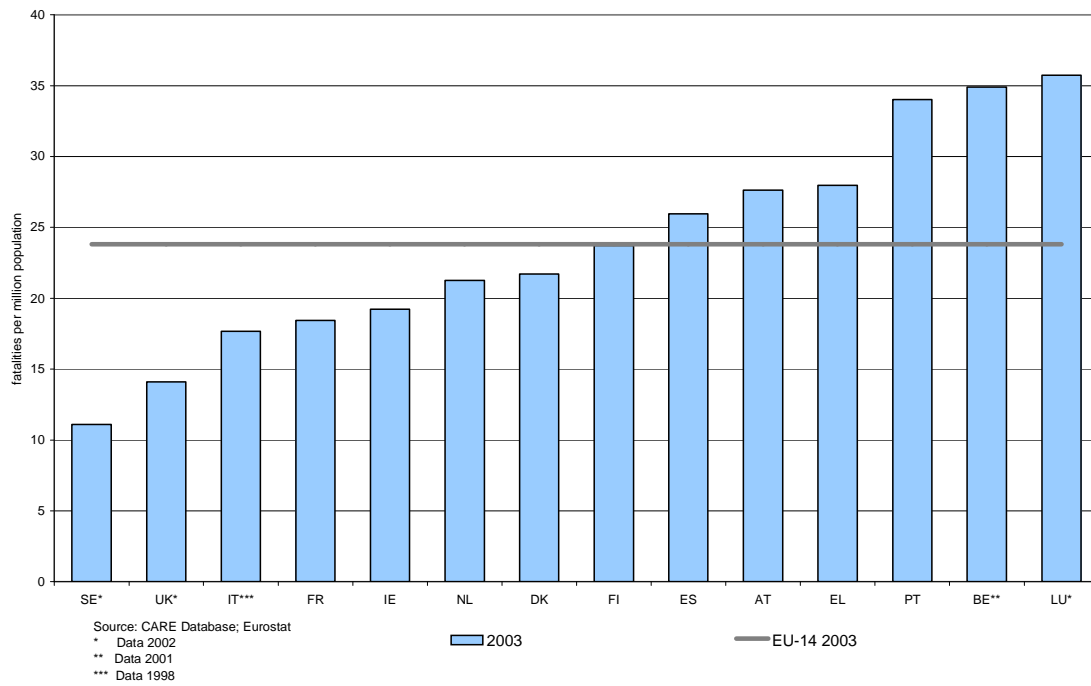


Figure 2: Fatality rate per million population, Evolution 1994-2003 (EU-25)

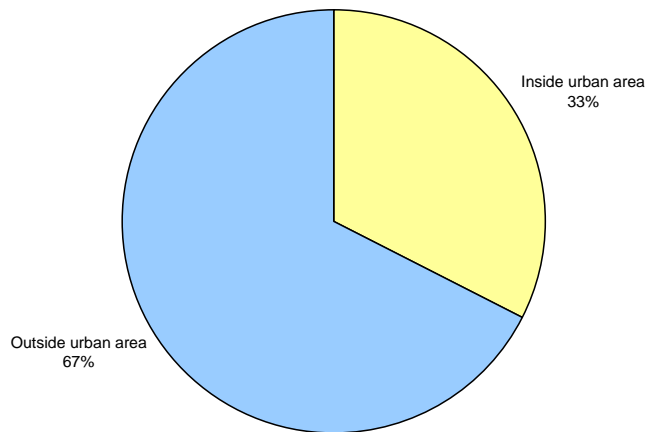


**Figure 3: Children (aged 0 to 14years) fatality rate per million children population 2003**




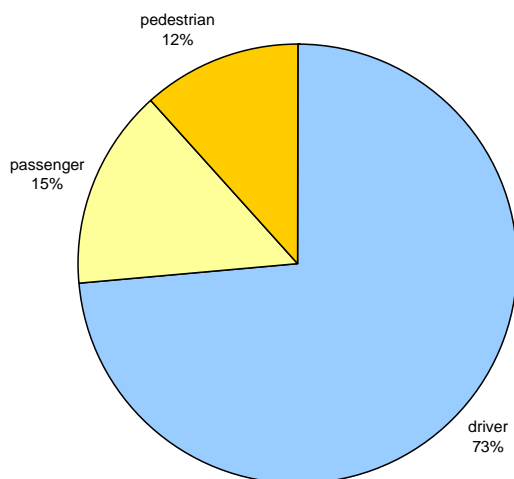
## 2.2 Interesting Details

Figure 4: Number of fatalities by area type, 2003\*



Source: CARE Database  
Date of query: 17-aug-2005

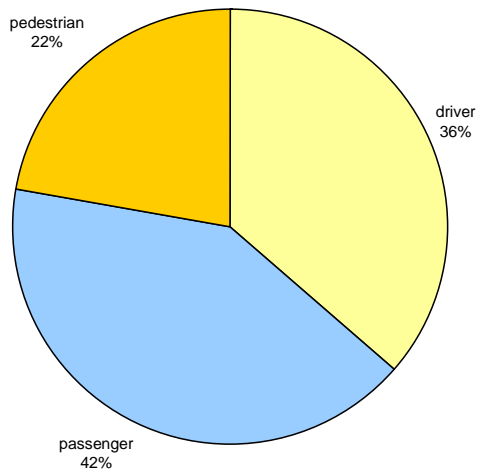
Figure 5: Distribution of male fatalities by person class, 2003\*



Source: CARE Database  
Date of query: 17-aug-2005

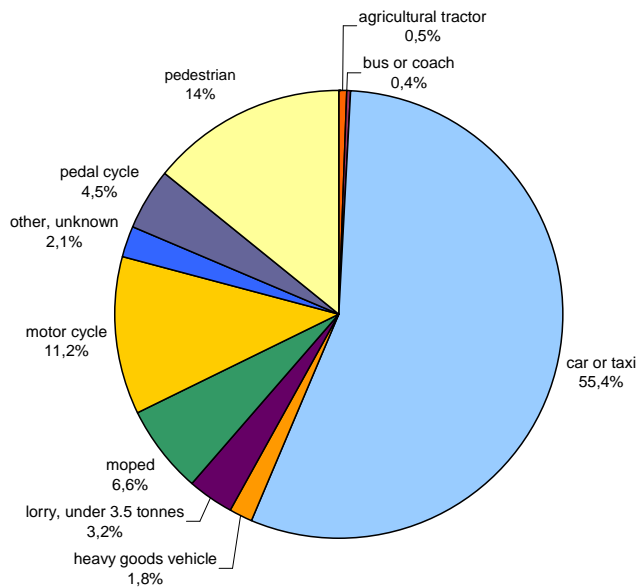
\* IT: 1998, BE: 2001, LU, SE & UK:2002

**Figure 6: Distribution of female fatalities by person class, 2003\***



Source: CARE Database  
Date of query: 17-aug-2005

**Figure 7: Distribution of fatalities by mode of transport, 2003\***



Source: CARE Database  
Date of query: 17-aug-2005

\* IT: 1998, BE: 2001, LU, SE & UK:2002

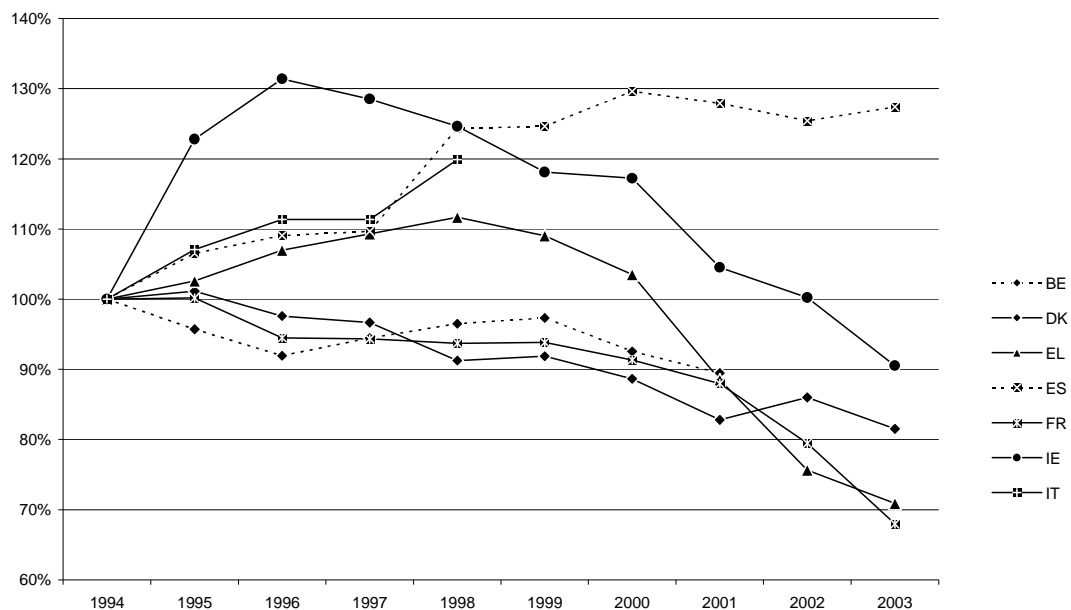
### 3 Time Series – last 10 years

#### 3.1 General time series

**Table 1: Annual number of injury accidents per country**

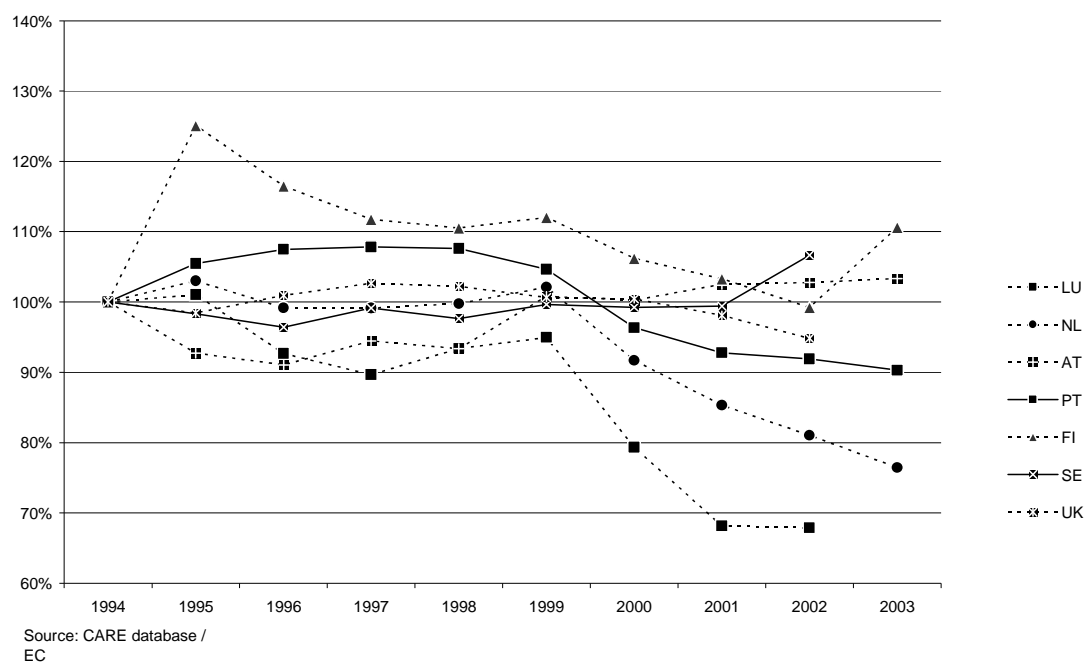
	1994	1995	1996	1997	1998	1999	2000	2001	2002	2003
BE	53.018	50.744	48.750	50.078	51.167	51.601	49.065	47.444	-	-
DK	8.279	8.373	8.080	8.004	7.556	7.604	7.340	6.856	7.121	6.749
EL	22.222	22.798	23.775	24.295	24.819	24.231	23.001	19.671	16.809	15.751
ES	78.474	83.586	85.588	86.062	97.570	97.811	101.729	100.393	98.433	99.987
FR	132.726	132.949	125.406	125.202	124.387	124.524	121.223	116.745	105.470	90.220
IE	6.610	8.117	8.686	8.496	8.239	7.806	7.749	6.909	6.625	5.983
IT	170.679	182.761	190.068	190.031	204.615	-	-	-	-	-
LU	1.133	1.145	1.050	1.016	1.058	1.076	899	772	769	-
NL	41.391	42.641	41.041	41.036	41.299	42.271	37.946	35.313	33.538	31.635
AT	42.015	38.956	38.253	39.695	39.225	42.348	42.126	43.073	43.175	43.423
PT	45.830	48.339	49.265	49.417	49.318	47.965	44.158	42.521	42.114	41.377
FI	6.245	7.812	7.274	6.980	6.902	6.997	6.633	6.451	6.196	6.907
SE	15.888	15.626	15.321	15.752	15.514	15.834	15.770	15.796	16.947	-
UK	241.037	237.336	243.286	247.479	246.410	242.609	242.116	236.460	228.534	-
EU 14	865.547	881.183	885.843	893.543	918.079	-	-	-	-	-
Yearly Change	-	1,8%	0,5%	0,9%	2,7%	-	-	-	-	-

Source: CARE Database / EC  
Date of query: 2-aug-2005

**Figure 8: Injury accidents per country (BE – IT) 1994-2003\***


Source: CARE database / EC

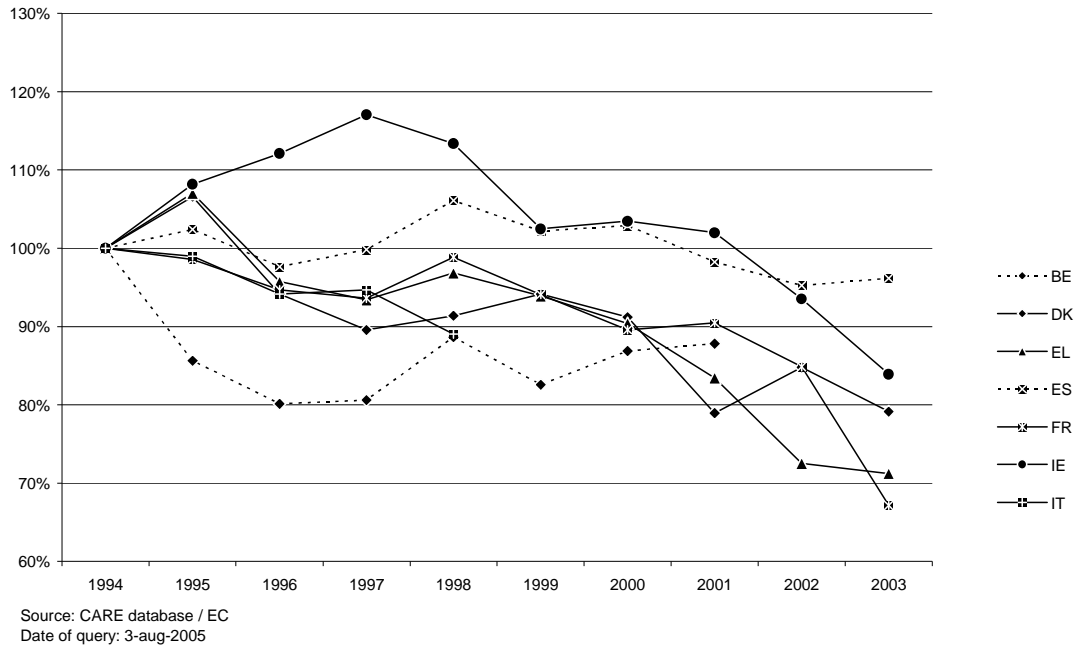
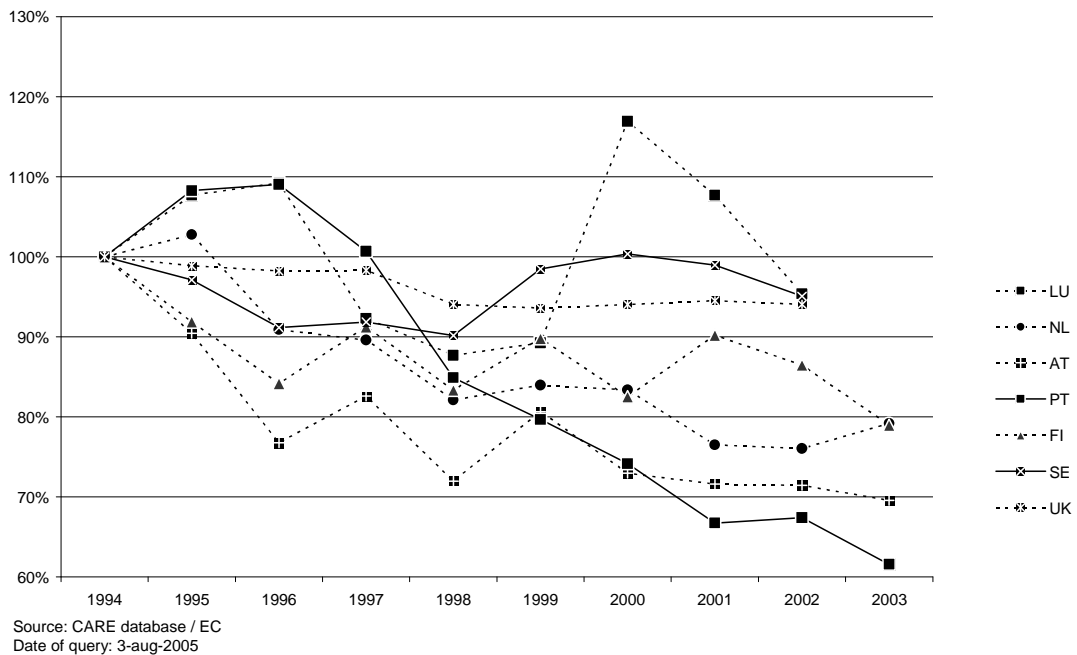
\* IT: 1998, BE: 2001, LU, SE & UK: 2002

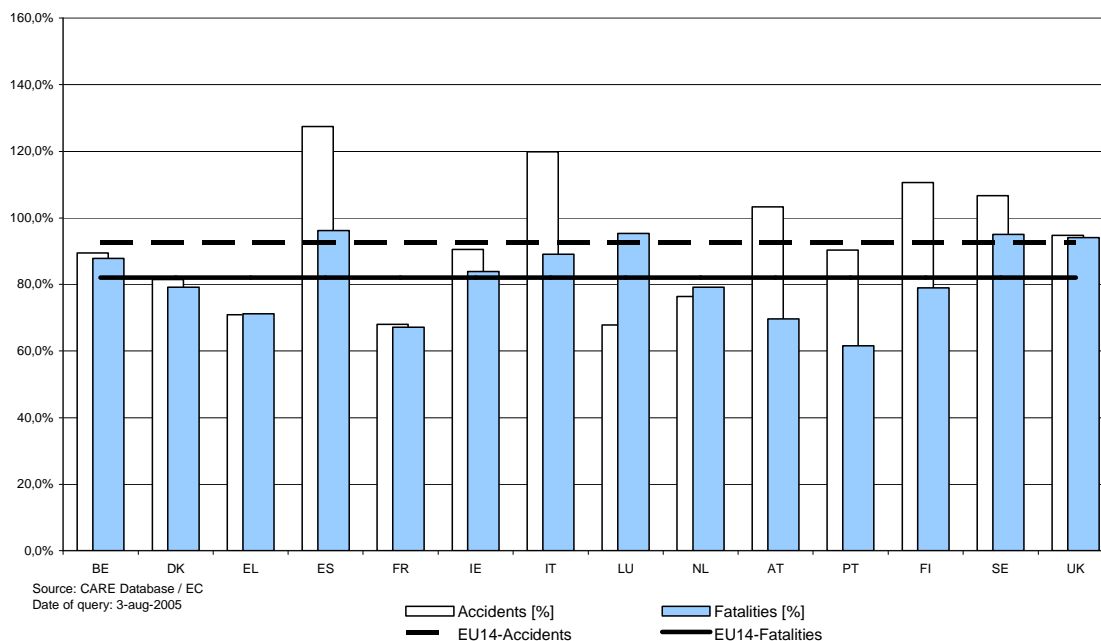
**Figure 9: Injury accidents per country (LU-UK) 1994-2003\***

**Table 2: Annual number of fatalities per country**

	1994	1995	1996	1997	1998	1999	2000	2001	2002	2003
BE	1.692	1.449	1.356	1.364	1.500	1.397	1.470	1.486	-	-
DK	546	582	514	489	499	514	498	431	463	432
EL	2.253	2.411	2.157	2.105	2.182	2.116	2.037	1.880	1.634	1.605
ES	5.614	5.749	5.482	5.604	5.957	5.738	5.777	5.516	5.347	5.400
FR	9.019	8.891	8.541	8.444	8.918	8.487	8.079	8.160	7.655	6.058
IE	404	437	453	473	458	414	418	412	378	339
IT	7.091	7.020	6.676	6.713	6.314	-	-	-	-	-
LU	65	70	71	60	57	58	76	70	62	-
NL	1.298	1.334	1.180	1.163	1.066	1.090	1.082	993	987	1.028
AT	1.338	1.210	1.027	1.105	963	1.079	976	958	956	931
PT	2.504	2.711	2.730	2.521	2.126	1.995	1.857	1.671	1.668	1.542
FI	480	441	404	438	400	431	396	433	415	379
SE	589	572	537	541	531	580	591	583	560	-
UK	3.807	3.765	3.740	3.743	3.581	3.564	3.580	3.598	3.581	-
EU 14	36.700	36.642	34.868	34.763	34.552	-	-	-	-	-
Yearly Change	-	-0,2%	-4,8%	-0,3%	-0,6%	-	-	-	-	-

Source: CARE Database / EC  
Date of query: 2-aug-2005

\* IT: 1998, BE: 2001, LU, SE & UK: 2002

**Figure 10: Annual number of fatalities per country (BE-IT)**

**Figure 11: Annual number of fatalities per country (LU-UK)**


**Figure 12: Number of fatalities and injury accidents per country in 2003\* as proportion of the number in 1994**

**Table 3: Annual number of fatal accidents\*\* per country**

	1994	1995	1996	1997	1998	1999	2000	2001	2002	2003
BE	1.564	1.337	1.237	1.255	1.345	1.299	1.356	1.378	-	-
DK	513	539	448	461	462	467	454	385	415	382
EL	1.671	1.798	1.870	1.837	1.921	1.876	1.803	1.669	1.438	1.400
ES	4.139	4.193	4.042	4.062	4.319	4.239	4.372	4.170	4.031	4.084
FR	7.609	7.453	7.178	7.130	7.514	7.185	6.811	6.920	6.549	5.168
IE	371	405	415	424	408	373	362	360	346	301
IT	5.924	5.819	5.590	5.605	5.304	-	-	-	-	-
LU	63	65	67	57	56	53	68	65	52	-
NL	1.191	1.227	1.099	1.076	988	1.028	1.006	932	913	940
AT	1.195	1.084	933	1.005	865	947	889	861	873	848
PT	1.724	1.856	1.880	1.732	1.647	1.582	1.450	1.316	1.317	1.219
FI	423	411	355	391	367	391	354	386	367	346
SE	528	519	488	493	490	516	535	511	490	-
UK	3.462	3.412	3.404	3.434	3.276	3.267	3.257	3.313	3.260	-
EU 14	30.377	30.118	29.006	28.962	28.962	-	-	-	-	-
Yearly Change	-	-0,9%	-3,7%	-0,2%	0,0%	-	-	-	-	-

Source: CARE Database / EC  
Date of query: 2-aug-2005

\* IT: 1998, BE: 2001, LU, SE & UK: 2002

\*\* Note that numbers have not been corrected for 30 day definition for EL, ES, FR, IT and PT

### 3.2 Mode of transport related time series

**Table 4: Annual number of pedestrian fatalities per country**

	1994	1995	1996	1997	1998	1999	2000	2001	2002	2003
BE	197	149	154	142	162	154	142	158	-	-
DK	93	118	68	87	73	82	99	49	63	49
EL	479	481	422	409	417	399	375	338	279	257
ES	1.007	1.000	960	967	996	906	899	846	776	786
FR	1.190	1.086	1.043	982	1.044	932	838	822	866	626
IE	121	113	115	130	114	92	85	89	86	64
IT	1.022	945	985	893	844	-	-	-	-	-
LU	7	8	9	8	3	2	11	11	6	-
NL	124	142	109	119	110	111	106	106	97	97
AT	225	200	157	156	165	182	140	117	160	132
PT	564	598	624	549	406	393	384	337	339	280
FI	87	72	70	69	62	67	62	62	40	59
SE	86	71	74	72	69	86	73	87	58	-
UK	1.169	1.085	1.039	1.010	946	909	889	858	808	-
EU 14	6.371	6.068	5.829	5.593	5.411	-	-	-	-	-
Yearly Change	-	-4,8%	-3,9%	-4,0%	-3,3%	-	-	-	-	-
Total - all users	36.700	36.642	34.868	34.763	34.552	-	-	-	-	-
% pedestrians	17,4%	16,6%	16,7%	16,1%	15,7%	-	-	-	-	-

Source: CARE Database / EC  
Date of query: 2-aug-2005

**Table 5: Annual number of pedal cyclist fatalities per country (includes all riders and passengers of pedal cycles)**

	1994	1995	1996	1997	1998	1999	2000	2001	2002	2003
BE	151	128	121	122	135	122	134	130	-	-
DK	77	77	88	65	58	59	58	56	52	47
EL	28	34	28	32	34	23	22	29	14	21
ES	152	123	101	116	114	119	84	100	96	78
FR	339	395	317	348	318	324	270	256	223	201
IE	26	28	22	24	21	14	10	12	18	11
IT	437	391	413	428	364	-	-	-	-	-
LU	1	3	1	1	1	0	1	1	1	-
NL	269	267	233	242	194	194	198	195	169	188
AT	75	77	73	66	57	68	62	55	80	56
PT	69	96	75	75	74	41	56	50	57	63
FI	63	74	46	61	54	63	53	59	53	39
SE	52	57	49	42	58	45	47	43	42	-
UK	178	217	208	187	165	173	131	140	133	-
EU 14	1.917	1.968	1.776	1.809	1.648	-	-	-	-	-
Yearly Change	-	2,6%	-9,8%	1,9%	-8,9%	-	-	-	-	-
Total - all users	36.700	36.642	34.868	34.763	34.552	-	-	-	-	-
% pedal cyclists	5,2%	5,4%	5,1%	5,2%	4,8%	-	-	-	-	-

Source: CARE Database / EC  
Date of query: 2-aug-2005

**Table 6: Annual number of moped rider&passenger fatalities per country**

	1994	1995	1996	1997	1998	1999	2000	2001	2002	2003
BE	93	71	67	68	78	56	66	63	-	-
DK	36	28	26	27	39	41	47	43	38	43
EL	205	237	122	114	114	108	90	77	55	53
ES	379	386	387	440	506	515	474	461	383	391
FR	498	498	505	498	442	490	456	450	387	393
IE*	-	-	-	-	-	-	-	-	-	-
IT	738	685	674	702	675	-	-	-	-	-
LU	1	2	0	1	1	0	0	0	0	-
NL	98	118	107	88	89	107	107	78	98	94
AT	65	67	47	58	33	48	44	37	46	47
PT	517	530	478	439	316	272	233	186	150	163
FI	22	20	17	16	16	8	9	7	7	12
SE	10	9	14	13	12	12	10	9	12	-
UK*	-	-	-	-	-	-	-	-	-	-
EU 12	2.663	2.651	2.444	2.464	2.321	-	-	-	-	-
Yearly Change	-	-0,5%	-7,8%	0,8%	-5,8%	-	-	-	-	-
Total - all users	36.700	36.642	34.868	34.763	34.552	-	-	-	-	-
% mopedists	7,3%	7,2%	7,0%	7,1%	6,7%	-	-	-	-	-

Source: CARE Database / EC

Date of query: 2-aug-2005

\* Ireland and United Kingdom do not separate Mopeds and Motorcyclists; Mopedists are counted in the Motorcycle table.

**Table 7: Annual number of motorcycle rider&passenger fatalities per country**

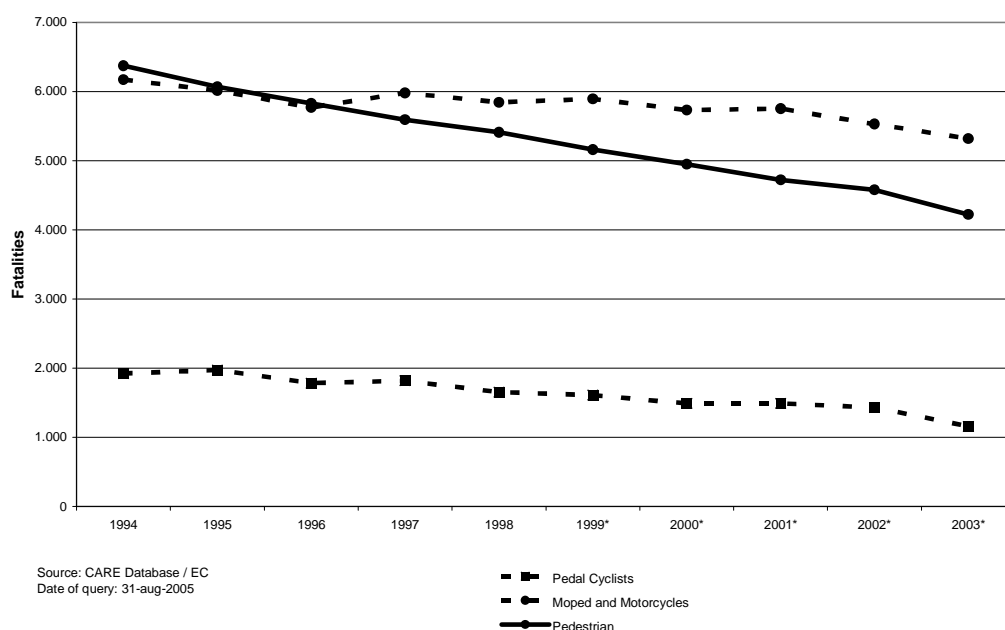
	1994	1995	1996	1997	1998	1999	2000	2001	2002	2003
BE	141	116	107	125	121	142	118	147	-	-
DK	40	35	23	19	21	26	24	12	24	25
EL	367	391	419	392	455	453	406	426	341	310
ES	480	479	457	459	421	387	392	370	401	367
FR	889	843	804	919	986	983	964	1.093	1.063	884
IE*	55	57	58	68	37	43	40	50	44	55
IT	591	502	519	520	516	-	-	-	-	-
LU	4	2	6	2	6	5	8	6	0	-
NL	112	90	91	92	76	75	89	76	93	95
AT	94	85	84	111	87	103	112	107	89	109
PT	241	263	255	241	238	221	193	213	209	182
FI	10	13	16	8	9	13	10	16	22	23
SE	31	32	40	36	40	36	39	38	37	-
UK*	454	454	447	525	509	556	612	594	628	-
EU 14	3.508	3.362	3.326	3.516	3.523	-	-	-	-	-
Yearly Change	-	-4,2%	-1,1%	5,7%	0,2%	-	-	-	-	-
Total - all users	36.700	36.642	34.868	34.763	34.552	-	-	-	-	-
% motorcyclists	9,6%	9,2%	9,5%	10,1%	10,2%	-	-	-	-	-

Source: CARE Database / EC

Date of query: 2-aug-2005

\* Ireland and United Kingdom do not separate Mopeds and Motorcyclists; Mopedists are counted in the Motorcycle table.



**Figure 13: Annual number<sup>2</sup> of fatalities by mode of transport (in which the fatality was travelling), EU-14**

**Table 8: Annual number of fatalities in accidents involving cars or taxis (Attention: fatalities in cars or taxis plus all opponents) per country**

	1994	1995	1996	1997	1998	1999	2000	2001	2002	2003
BE	1.415	1.242	1.134	1.127	1.244	1.134	1.219	1.223	-	-
DK	410	443	393	363	385	386	360	334	342	313
EL	1.404	1.481	1.367	1.365	1.424	1.387	1.376	1.248	1.144	1.108
ES	4.367	4.508	4.250	4.311	4.641	4.463	4.533	4.333	4.260	4.369
FR	7.623	7.490	7.284	7.128	7.589	7.236	6.902	6.890	6.443	4.978
IE	297	294	328	341	344	325	352	318	294	250
IT	5.816	5.840	5.519	5.562	5.218	-	-	-	-	-
LU	59	57	61	53	49	53	67	63	58	-
NL	924	1.004	865	858	803	770	764	707	721	697
AT	1.088	978	852	882	766	855	724	731	749	713
PT	1.622	1.794	1.829	1.785	1.570	1.324	1.218	1.043	1.112	1.013
FI	367	336	306	332	317	324	302	331	320	284
SE	493	475	425	444	424	481	480	467	463	-
UK	2.497	2.502	2.515	2.551	2.459	2.438	2.466	2.492	2.502	-
EU 14	28.382	28.444	27.128	27.102	27.233	-	-	-	-	-
Yearly Change		0,2%	-4,6%	-0,1%	0,5%	-	-	-	-	-
Total - all users	36.700	36.642	34.868	34.763	34.552	-	-	-	-	-
% car or taxi	77%	78%	78%	78%	79%	-	-	-	-	-

Source: CARE Database / EC  
Date of query: 31-Aug-2005

<sup>2</sup> Where the data for a particular country was not available for a particular year, the data for the most recent year for which it was available was used instead when calculating totals: IT (1998), BE (2001), LU, SE, and UK (2002).

**Table 9: Annual number of fatalities in accidents involving heavy goods vehicles or lorries <3,5t (Attention: fatalities in heavy goods vehicles or lorries <3,5t plus all opponents) per country**

	1994	1995	1996	1997	1998	1999	2000	2001	2002	2003
BE	309	280	268	263	306	301	315	297	-	-
DK	173	185	178	170	160	168	163	139	144	136
EL	627	763	655	557	558	538	508	458	446	419
ES	1.518	1.649	1.479	1.611	1.660	1.566	1.558	1.504	1.500	1.460
FR	1.685	1.643	1.492	1.403	1.528	1.432	1.214	1.299	1.242	988
IE	100	127	111	136	123	98	115	117	85	96
IT	934	1.006	892	854	759	-	-	-	-	-
LU	10	8	8	6	7	3	5	6	12	-
NL	376	354	335	307	248	310	288	287	242	303
AT	262	238	180	199	191	223	193	173	196	196
PT	790	809	876	662	393	670	603	562	545	535
FI	157	120	127	161	114	156	115	142	137	138
SE	127	129	133	132	143	119	153	147	163	-
UK	779	818	759	716	743	756	702	734	711	-
EU 14	7.847	8.129	7.493	7.177	6.933	-	-	-	-	-
Yearly Change		3,6%	-7,8%	-4,2%	-3,4%	-	-	-	-	-
Total - all users	36.700	36.642	34.868	34.763	34.552	-	-	-	-	-
% HGV or lorries < 3.5t	21,4%	22,2%	21,5%	20,6%	20,1%	-	-	-	-	-

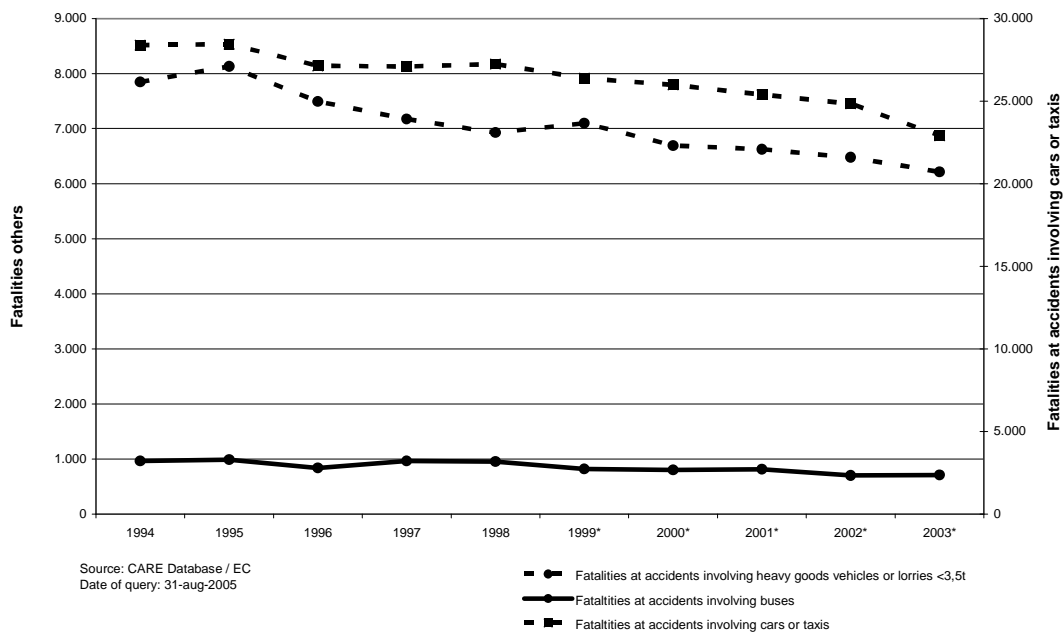
Source: CARE Database / EC  
Date of query: 31-Aug-2005

**Table 10: Annual number of fatalities per country in accidents involving buses (Attention: fatalities in buses plus all opponents)**

	1994	1995	1996	1997	1998	1999	2000	2001	2002	2003
BE	24	20	37	37	47	23	28	29	-	-
DK	19	22	24	15	11	25	14	14	22	26
EL	94	81	66	79	93	79	71	59	60	94
ES	174	153	154	180	184	163	144	135	109	126
FR	156	167	113	179	128	131	153	122	112	99
IE	14	14	15	11	16	14	12	9	8	2
IT	130	147	121	137	105	-	-	-	-	-
LU	0	4	5	3	0	0	4	6	4	-
NL	21	20	23	29	29	21	23	27	21	21
AT	31	46	18	25	14	41	36	33	17	20
PT	111	91	86	104	145	58	57	66	51	26
FI	20	26	12	20	22	18	18	28	17	13
SE	22	28	35	15	16	23	16	32	29	-
UK	148	170	129	132	144	118	119	148	117	-
EU 14	964	989	838	966	954	-	-	-	-	-
Yearly Change		2,6%	-15,3%	15,3%	-1,2%	-	-	-	-	-
Total - all users	36.700	36.642	34.868	34.763	34.552	-	-	-	-	-
% busses	2,6%	2,7%	2,4%	2,8%	2,8%	-	-	-	-	-

Source: CARE Database / EC  
Date of query: 31-Aug-2005

**Figure 14: Annual number<sup>3</sup> of fatalities involving different modes of transport (Attention: fatalities in specific mode of transport plus all opponents), EU-14**



<sup>3</sup> Where the data for a particular country was not available for a particular year, the data for the most recent year for which it was available was used instead when calculating totals: IT (1998), BE (2001), LU, SE and UK (2002).

### 3.3 Person age, and gender related time series

**Table 11: Annual number of fatalities by age band per country: 1994-1999**

	1994				1995				1996			
	0 to 15	16 to 24	25 to 64	65+	0 to 15	16 to 24	25 to 64	65+	0 to 15	16 to 24	25 to 64	65+
BE	76	429	887	290	93	327	778	237	63	305	712	267
DK	27	124	250	145	35	147	241	159	45	114	226	129
EL	101	523	1.218	409	84	530	1.333	454	85	486	1.127	437
ES	292	1.354	3.045	796	269	1.316	3.175	844	236	1.203	3.068	855
FR	552	2.332	4.552	1.583	569	2.232	4.604	1.486	520	2.045	4.426	1.550
IE	33	108	177	68	31	128	177	67	31	124	197	61
IT	284	1.553	3.358	1.601	247	1.574	3.405	1.497	240	1.428	3.277	1.435
LU	2	10	47	4	1	19	38	8	2	15	46	3
NL	104	282	623	289	100	282	643	309	86	271	550	273
AT	65	368	673	232	64	303	630	213	57	261	513	195
PT	172	634	1.227	437	163	701	1.386	430	139	633	1.447	485
FI	44	91	229	116	39	71	212	119	40	87	175	102
SE	39	89	263	198	35	94	266	175	29	89	238	181
UK	323	895	1.686	872	289	887	1.678	890	285	890	1.760	781
Total	2.113	8.792	18.235	7.041	2.018	8.611	18.567	6.889	1.859	7.952	17.762	6.754
% by age group	5,8%	24,0%	49,7%	19,2%	5,5%	23,5%	50,7%	18,8%	5,3%	22,8%	50,9%	19,4%

	1997				1998				1999			
	0 to 15	16 to 24	25 to 64	65+	0 to 15	16 to 24	25 to 64	65+	0 to 15	16 to 24	25 to 64	65+
BE	61	295	761	237	99	334	795	260	72	319	769	233
DK	28	113	216	132	22	99	255	123	43	111	243	117
EL	84	466	1.127	406	74	466	1.167	445	66	475	1.132	415
ES	223	1.239	3.107	900	260	1.365	3.334	890	258	1.255	3.187	910
FR	498	2.085	4.361	1.494	455	2.198	4.671	1.587	421	2.172	4.396	1.443
IE	34	127	202	66	40	138	189	80	26	114	188	71
IT	217	1.300	3.381	1.548	189	1.231	3.218	1.379	-	-	-	-
LU	3	17	28	9	2	8	39	7	2	12	37	7
NL	79	246	572	266	56	254	529	227	82	247	519	242
AT	43	298	552	212	48	205	502	208	51	254	549	225
PT	139	580	1.331	441	152	519	1.086	365	96	477	1.064	340
FI	36	72	207	123	24	72	200	104	33	72	230	96
SE	32	73	265	171	33	84	266	148	44	82	281	173
UK	268	903	1.784	788	224	787	1.797	771	239	783	1.765	758
Total	1.744	7.815	17.894	6.792	1.677	7.759	18.049	6.593	-	-	-	-
% by age group	5,0%	22,8%	52,3%	19,8%	4,8%	22,3%	52,0%	19,0%	-	-	-	-

Source: CARE Database / EC  
Date of query: 3-aug-2005

**Table 12: Annual number of fatalities by age band per country: 2000-2003**

	2000				2001				2002			
	0 to 15	16 to 24	25 to 64	65+	0 to 15	16 to 24	25 to 64	65+	0 to 15	16 to 24	25 to 64	65+
BE	67	368	784	238	71	319	824	264	-	-	-	-
DK	31	109	224	134	29	83	217	102	16	100	244	103
EL	54	421	1.107	428	56	427	981	385	51	326	898	340
ES	228	1.253	3.270	849	208	1.123	3.165	867	189	1.069	3.106	835
FR	414	1.933	4.221	1.370	347	2.058	4.276	1.393	288	1.855	4.061	1.361
IE	24	138	195	44	33	126	197	47	23	93	180	60
IT	-	-	-	-	-	-	-	-	-	-	-	-
LU	3	17	45	10	6	18	39	7	3	13	41	5
NL	66	271	510	235	61	205	505	222	55	249	469	213
AT	35	233	518	190	34	212	526	186	33	207	505	211
PT	89	393	1.013	342	65	375	868	320	72	315	953	304
FI	23	64	203	106	24	99	214	96	20	86	210	99
SE	24	113	300	154	25	115	296	147	27	111	283	139
UK	204	782	1.908	679	229	859	1.826	652	192	887	1.816	655
Total	-	-	-	-	-	-	-	-	-	-	-	-
% by age group	-	-	-	-	-	-	-	-	-	-	-	-

	2003			
	0 to 15	16 to 24	25 to 64	65+
BE	-	-	-	-
DK	25	80	228	99
EL	59	364	840	322
ES	-	-	-	-
FR	244	1.483	3.123	1.120
IE	17	93	166	53
IT	-	-	-	-
LU	-	-	-	-
NL	71	226	510	221
AT	45	207	481	197
PT	63	267	886	303
FI	24	69	190	96
SE	-	-	-	-
UK	-	-	-	-
Total	-	-	-	-
% by age group	-	-	-	-

Source: CARE Database / EC  
Date of query: 3-aug-2005

**Figure 15: Annual number of fatalities by year by age, EU-14: 1994 and 2003\***

**Table 13: Annual number of female fatalities per country**

	1994	1995	1996	1997	1998	1999	2000	2001	2002	2003
BE	422	354	336	345	419	376	367	384	-	-
DK	160	199	144	122	142	142	151	117	119	122
EL	514	526	508	449	477	453	440	416	351	289
ES	1.346	1.437	1.335	1.345	1.478	1.409	1.338	1.325	1.263	1.246
FR	2.536	2.471	2.380	2.245	2.477	2.329	1.951	2.057	1.869	1.435
IE	104	117	108	131	115	118	104	103	101	79
IT	1.723	1.672	1.628	1.567	1.481	-	-	-	-	-
LU	12	19	15	19	8	16	17	17	12	-
NL	370	383	342	336	294	282	294	246	246	262
AT	331	309	289	288	269	320	246	251	276	251
PT	541	563	568	508	392	390	347	363	347	302
FI	150	113	126	150	111	131	133	137	114	107
SE	180	167	161	136	121	158	153	149	137	-
UK	1.147	1.122	1.030	1.030	1.026	958	914	864	915	-
EU 14	9.536	9.452	8.971	8.672	8.810	-	-	-	-	-
Yearly Change	-	-0,9%	-5,1%	-3,3%	1,6%	-	-	-	-	-
Total - all users	36.700	36.642	34.868	34.763	34.552	-	-	-	-	-
% Female	26,0%	25,8%	25,7%	24,9%	25,5%	-	-	-	-	-

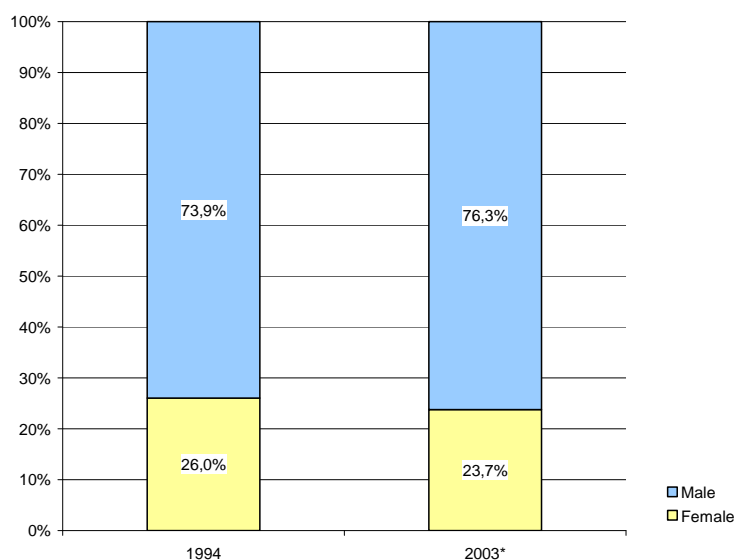
Source: CARE Database / EC  
Date of query: 3-aug-2005

\* IT: 1998, BE: 2001, LU, SE & UK: 2002

**Table 14: Annual number of male fatalities per country**

	1994	1995	1996	1997	1998	1999	2000	2001	2002	2003
BE	1.270	1.094	1.020	1.018	1.080	1.021	1.102	1.102	-	-
DK	386	383	370	367	357	372	347	314	344	310
EL	1.738	1.874	1.639	1.647	1.688	1.653	1.590	1.458	1.277	1.313
ES	4.221	4.253	4.079	4.178	4.421	4.263	4.323	4.123	4.008	4.062
FR	6.484	6.420	6.160	6.199	6.441	6.158	6.127	6.103	5.786	4.622
IE	295	318	342	335	339	287	302	304	260	246
IT	5.368	5.348	5.048	5.145	4.833	-	-	-	-	-
LU	53	51	56	41	49	42	59	52	50	-
NL	928	951	838	827	768	802	784	743	734	758
AT	1.007	901	738	817	694	759	730	707	680	680
PT	1.963	2.148	2.152	2.011	1.734	1.599	1.504	1.306	1.320	1.240
FI	330	328	278	288	289	300	263	296	301	272
SE	408	403	376	404	410	422	438	433	423	-
UK	2.655	2.643	2.710	2.713	2.555	2.604	2.666	2.728	2.662	-
EU 14	27.106	27.114	25.806	25.991	25.658	-	-	-	-	-
Yearly Change	-	0,0%	-4,8%	0,7%	-1,3%	-	-	-	-	-
Total - all users	36.700	36.642	34.868	34.763	34.552	-	-	-	-	-
% Male	73,9%	74,0%	74,0%	74,8%	74,3%	-	-	-	-	-

Source: CARE Database / EC  
Date of query: 3-aug-2005

**Figure 16: Annual distribution of fatalities by gender, EU-14: 1994 and 2003\***


Source: CARE database EU14  
Date of query: 5-aug-2005

\* IT: 1998, BE: 2001, LU, SE & UK: 2002

**Table 15: Annual number of female fatalities per country, drivers**

	1994	1995	1996	1997	1998	1999	2000	2001	2002	2003
BE	191	171	163	169	190	182	184	188	-	-
DK	85	87	65	66	76	69	66	56	60	57
EL	65	60	73	60	77	69	70	65	56	50
ES	264	276	256	282	311	332	303	333	330	337
FR	986	984	983	962	1.016	1.012	880	970	842	642
IE	28	32	41	36	30	43	38	33	35	26
IT	513	547	537	515	508	-	-	-	-	-
LU	5	9	9	8	3	10	6	4	6	-
NL	222	218	206	191	167	171	184	148	142	151
AT	113	110	112	111	89	129	100	112	105	115
PT	88	81	86	88	63	80	86	70	83	70
FI	62	45	51	59	55	69	53	63	49	40
SE	69	68	67	54	53	54	67	52	56	-
UK	306	309	311	326	334	315	286	305	299	-
EU 14	2.998	2.996	2.960	2.927	2.971	-	-	-	-	-
Yearly Change	-	0,0%	-1,2%	-1,1%	1,5%	-	-	-	-	-
Total - all users	36.700	36.642	34.868	34.763	34.552	-	-	-	-	-
% Female drivers	8,2%	8,2%	8,5%	8,4%	8,6%	-	-	-	-	-

Source: CARE Database / EC  
Date of query: 3-aug-2005

**Table 16: Annual number of male fatalities per country, drivers**

	1994	1995	1996	1997	1998	1999	2000	2001	2002	2003
BE	996	856	796	821	849	824	883	866	-	-
DK	285	264	274	265	268	270	229	244	250	245
EL	1.191	1.299	1.133	1.137	1.181	1.157	1.122	1.064	921	958
ES	2.785	2.850	2.746	2.859	3.077	2.988	3.007	2.864	2.789	2.834
FR	4.800	4.707	4.547	4.600	4.854	4.684	4.613	4.651	4.398	3.586
IE	173	197	206	191	203	184	189	182	166	166
IT	3.883	3.896	3.633	3.827	3.621	-	-	-	-	-
LU	44	41	38	31	42	35	45	40	35	-
NL	740	758	678	676	612	626	609	600	587	616
AT	714	663	545	626	518	536	561	547	519	509
PT	1.258	1.400	1.392	1.346	1.157	1.080	954	885	860	880
FI	227	240	199	217	200	214	205	219	231	207
SE	314	316	280	311	326	322	331	318	322	-
UK	1.541	1.577	1.632	1.679	1.604	1.635	1.716	1.739	1.751	-
EU 14	18.950	19.064	18.099	18.585	18.512	-	-	-	-	-
Yearly Change	-	0,6%	-5,1%	2,7%	-0,4%	-	-	-	-	-
Total - all users	36.700	36.642	34.868	34.763	34.552	-	-	-	-	-
% Male drivers	51,6%	52,0%	51,9%	53,5%	53,6%	-	-	-	-	-

Source: CARE Database / EC  
Date of query: 3-aug-2005



**Table 17: Annual number of female fatalities per country, passengers**

	1994	1995	1996	1997	1998	1999	2000	2001	2002	2003
BE	153	125	113	122	152	126	117	128	-	-
DK	41	52	51	29	36	46	42	38	40	48
EL	267	290	278	243	232	225	236	208	193	150
ES	747	815	746	717	810	741	738	706	684	658
FR	1.073	1.044	1.006	896	1.065	948	786	794	680	538
IE	39	49	29	54	49	36	36	41	37	31
IT	776	697	641	672	637	-	-	-	-	-
LU	4	7	6	7	4	6	6	10	4	-
NL	101	113	86	89	76	80	76	61	63	72
AT	130	112	113	110	96	112	72	90	96	79
PT	248	259	272	225	187	176	150	172	155	137
FI	44	39	36	48	33	41	45	48	43	42
SE	67	68	58	53	45	65	50	68	55	-
UK	390	400	352	345	338	343	321	291	333	-
EU 14	4.080	4.071	3.787	3.610	3.761	-	-	-	-	-
Yearly Change	-	-0,2%	-7,0%	-4,7%	4,2%	-	-	-	-	-
Total - all users	36.700	36.642	34.868	34.763	34.552	-	-	-	-	-
% Female passengers	11,1%	11,1%	10,9%	10,4%	10,9%	-	-	-	-	-

Source: CARE Database / EC  
Date of query: 3-aug-2005

**Table 18: Annual number of male fatalities per country, passengers**

	1994	1995	1996	1997	1998	1999	2000	2001	2002	2003
BE	155	146	129	109	145	111	142	146	-	-
DK	42	60	56	42	46	47	62	44	50	33
EL	251	276	249	253	268	263	230	199	181	188
ES	786	777	740	717	732	733	757	727	722	730
FR	970	1.071	961	1.004	939	911	961	923	869	666
IE	42	46	60	57	59	51	59	62	39	40
IT	834	892	816	768	652	-	-	-	-	-
LU	5	5	9	6	5	5	8	4	11	-
NL	111	102	101	88	98	98	104	76	92	85
AT	156	125	100	102	95	120	103	92	76	96
PT	345	373	346	312	314	261	278	205	231	176
FI	60	45	48	45	50	40	31	41	52	31
SE	46	47	56	50	38	53	70	57	69	-
UK	398	394	406	383	359	361	368	399	386	-
EU 14	4.202	4.359	4.076	3.936	3.799	-	-	-	-	-
Yearly Change	-	3,7%	-6,5%	-3,5%	-3,5%	-	-	-	-	-
Total - all users	36.700	36.642	34.868	34.763	34.552	-	-	-	-	-
% Male passengers	11,4%	11,9%	11,7%	11,3%	11,0%	-	-	-	-	-

Source: CARE Database / EC  
Date of query: 3-aug-2005

**Table 19: Annual number of female fatalities per country, pedestrians**

	1994	1995	1996	1997	1998	1999	2000	2001	2002	2003
BE	78	58	59	54	76	68	65	68	-	-
DK	34	60	28	27	30	27	43	23	19	17
EL	183	176	157	146	168	159	134	143	102	89
ES	336	346	334	347	357	337	297	285	248	251
FR	477	443	391	387	395	369	284	293	347	256
IE	37	36	38	41	36	39	30	29	29	22
IT	415	420	428	369	320	-	-	-	-	-
LU	3	3	0	4	1	0	5	3	2	-
NL	47	52	50	56	51	31	34	37	41	39
AT	88	87	64	67	84	79	74	49	75	57
PT	204	224	211	195	143	135	111	121	108	96
FI	44	29	39	43	23	21	35	26	22	25
SE	43	31	36	29	23	39	36	29	26	-
UK	451	413	367	359	354	300	307	268	283	-
EU 14	2.439	2.378	2.201	2.123	2.061	-	-	-	-	-
Yearly Change	-	-2,5%	-7,4%	-3,6%	-2,9%	-	-	-	-	-
Total - all users	36.700	36.642	34.868	34.763	34.552	-	-	-	-	-
% Female pedestrians	6,6%	6,5%	6,3%	6,1%	6,0%	-	-	-	-	-

Source: CARE Database / EC  
Date of query: 3-aug-2005

**Table 20: Annual number of male fatalities per country, pedestrians**

	1994	1995	1996	1997	1998	1999	2000	2001	2002	2003
BE	119	91	95	87	85	86	77	90	-	-
DK	59	58	40	60	43	55	56	26	44	32
EL	296	299	257	257	239	233	238	195	175	167
ES	650	625	594	602	612	542	559	532	497	499
FR	713	643	652	595	649	563	554	530	519	370
IE	80	75	76	87	77	52	54	60	55	40
IT	607	525	557	524	524	-	-	-	-	-
LU	4	5	9	4	2	2	6	8	4	-
NL	77	90	59	63	57	77	71	67	55	56
AT	137	113	93	89	81	103	66	68	85	75
PT	360	374	413	354	263	259	271	217	229	185
FI	43	43	31	26	39	46	27	36	18	34
SE	43	40	38	43	46	47	37	58	32	-
UK	716	672	672	651	592	608	582	590	525	-
EU 14	3.905	3.653	3.587	3.442	3.310	-	-	-	-	-
Yearly Change	-	-6,5%	-1,8%	-4,0%	-3,8%	-	-	-	-	-
Total - all users	36.700	36.642	34.868	34.763	34.552	-	-	-	-	-
% Male pedestrians	10,6%	10,0%	10,3%	9,9%	9,6%	-	-	-	-	-

Source: CARE Database / EC  
Date of query: 3-aug-2005

## 4 Fatalities 2003

### 4.1 People involved

#### 4.1.1 Age and gender of persons

**Table 21: Number of total fatalities by age per country 2003**

	0-9	10-15	16-17	18-20	21-24	25-29	30-39	40-49	50-59	60-64	65-74	75+	Total
BE**	41	30	38	108	173	179	251	202	139	53	132	132	1.486
DK	12	13	13	31	36	36	69	61	46	16	35	64	432
EL	29	30	68	119	177	182	234	211	155	58	174	148	1.605
ES	87	94	157	413	559	668	957	743	511	222	418	399	5.400
FR	109	135	200	522	761	583	1.025	731	591	192	493	628	6.058
IE	12	5	11	34	48	36	60	30	32	8	22	31	339
IT***	74	114	174	396	662	711	906	657	597	347	747	632	6.314
LU*	2	1	3	6	4	6	19	11	5	0	3	2	62
NL	33	38	47	85	94	89	157	117	99	48	82	139	1.028
AT	17	28	33	72	102	73	121	120	111	56	95	102	931
PT	30	33	23	63	181	186	252	219	154	75	166	137	1.542
FI	11	13	10	29	30	25	39	60	52	14	37	59	379
SE*	9	18	11	49	51	42	76	62	74	29	43	96	560
UK*	78	114	162	361	364	349	604	419	321	123	236	419	3.581
EU-14	544	667	949	2.287	3.242	3.165	4.770	3.643	2.887	1.242	2.683	2.988	29.716
% by age group	1,8%	2,2%	3,2%	7,7%	10,9%	10,7%	16,1%	12,3%	9,7%	4,2%	9,0%	10,1%	100,0%

Source: CARE Database / EC

Date of query: 3-aug-2005

\* Data 2002

\*\* Data 2001

\*\*\* Data 1998

**Table 22: Number of female fatalities by age per country 2003**

	0-9	10-15	16-17	18-20	21-24	25-29	30-39	40-49	50-59	60-64	65-74	75+	Total
BE**	18	11	10	27	32	36	57	47	36	10	54	43	384
DK	7	3	2	8	10	7	14	17	15	6	8	25	122
EL	9	12	16	12	17	28	32	26	28	19	45	42	289
ES	44	32	37	93	117	122	175	136	119	67	132	153	1.246
FR	41	38	42	99	110	75	183	180	149	72	162	267	1.435
IE	5	2	6	7	7	3	8	4	9	3	8	16	79
IT***	32	33	39	91	138	138	167	137	141	81	231	172	1.481
LU*	0	0	1	1	1	1	3	1	1	0	1	2	12
NL	9	18	17	19	21	13	26	19	24	13	34	49	262
AT	5	11	12	17	21	20	25	22	28	13	29	48	251
PT	15	14	2	9	23	34	34	35	29	13	42	48	302
FI	3	2	4	8	7	5	10	12	8	6	12	30	107
SE*	3	1	5	18	1	11	19	8	14	8	16	33	137
UK*	33	43	40	74	68	54	95	85	75	37	88	212	915
EU-14	225	220	233	483	573	547	848	728	676	347	861	1.140	7.023
% by age group	3,2%	3,1%	3,3%	6,9%	8,2%	7,8%	12,1%	10,4%	9,6%	4,9%	12,3%	16,2%	100,0%

Source: CARE Database / EC

Date of query: 9-aug-2005

\* Data 2002

\*\* Data 2001

\*\*\* Data 1998

**Table 23: Number of male fatalities by age per country 2003**

	0-9	10-15	16-17	18-20	21-24	25-29	30-39	40-49	50-59	60-64	65-74	75+	Total
BE**	23	19	28	81	141	143	194	155	103	43	78	89	1.102
DK	5	10	11	23	26	29	55	44	31	10	27	39	310
EL	20	18	52	107	160	154	202	184	127	39	129	106	1.313
ES	49	62	120	320	441	546	782	608	392	155	286	247	4.062
FR	68	97	157	423	651	508	842	552	442	120	331	360	4.622
IE	7	2	5	27	41	30	51	25	22	5	14	15	246
IT***	42	81	135	305	524	573	738	520	456	266	516	459	4.833
LU*	2	1	2	5	3	5	16	10	4	0	2	0	50
NL	24	20	30	66	72	74	131	98	72	35	48	88	758
AT	12	17	21	55	81	53	96	98	83	43	66	54	680
PT	15	19	21	54	158	152	218	184	125	63	124	89	1.240
FI	8	11	6	21	23	20	29	48	44	8	25	29	272
SE*	6	17	6	31	50	31	57	54	60	21	27	63	423
UK*	45	71	122	287	295	295	509	332	245	86	148	207	2.662
EU-14	326	445	716	1.804	2.667	2.614	3.921	2.911	2.206	895	1.822	1.845	22.573
% by age group	1,4%	2,0%	3,2%	8,0%	11,8%	11,6%	17,4%	12,9%	9,8%	4,0%	8,1%	8,2%	100,0%

Source: CARE Database / EC

Date of query: 9-aug-2005

\* Data 2002

\*\* Data 2001

\*\*\* Data 1998

#### 4.1.2 Age of persons by mode of transport

**Table 24: Number of fatalities aged 0 to 15 by mode of transport (in which the fatality was travelling) per country, 2003**

	under heavy									Total
	pedes- trian	pedal cycle	motor moped	motor cycle	car or taxi	3.5 tonnes	goods vehicle	bus or coach	agricultural tractor	
BE**	17	14	1	0	34	2	2	1	0	71
DK	3	3	4	0	15	0	0	0	0	25
EL	10	3	0	8	28	4	0	4	2	59
ES	40	5	24	0	103	11	1	1	0	189
FR	48	23	42	2	124	1	1	0	0	244
IE	8	3	0	0	6	0	0	0	0	17
IT***	39	16	47	2	80	0	0	1	1	189
LU*	1	0	0	0	2	0	0	0	0	3
NL	17	25	3	0	20	3	0	0	3	71
AT	8	5	4	0	23	0	1	0	2	45
PT	19	5	0	1	31	2	0	0	1	63
FI	2	3	4	1	9	0	0	0	0	24
SE*	4	2	4	1	13	0	1	2	0	27
UK*	79	25	0	3	78	0	0	3	0	192
Total	294	132	133	18	566	23	6	12	9	1.219
% by vehicle group	24,2%	10,8%	10,9%	1,5%	46,4%	1,9%	0,5%	1,0%	0,7%	100,0%

Source: CARE Database / EC

Date of query: 5-aug-2005

\* Data 2002

\*\* Data 2001

\*\*\* Data 1998

**Table 25: Number of fatalities aged 16 to 24 by mode of transport (in which the fatality was travelling) per country, 2003**

	pedes- trian	pedal cycle	moped	motor cycle	car or taxi	under 3.5 tonnes	heavy goods vehicle	bus or coach	agricultural tractor	Total
BE**	88	11	34	34	217	7	3	1	0	319
DK	28	4	13	4	46	7	0	0	0	80
EL	69	1	14	115	182	10	2	22	2	364
ES	51	13	180	64	763	39	11	2	2	1.069
FR	292	21	210	200	974	18	9	0	1	1.483
IE	25	1	0	14	59	10	1	0	0	93
IT***	227	15	215	150	783	0	25	0	1	1.231
LU*	4	0	0	0	13	0	0	0	0	13
NL	88	15	34	15	147	11	0	0	0	226
AT	53	2	12	23	158	3	2	0	0	207
PT	82	4	29	52	141	27	1	0	1	267
FI	26	2	1	9	51	2	0	0	0	69
SE*	31	3	4	11	83	1	2	0	1	111
UK*	271	14	14	128	603	8	7	4	0	887
<b>Total</b>	<b>1.335</b>	<b>106</b>	<b>760</b>	<b>819</b>	<b>4.220</b>	<b>143</b>	<b>63</b>	<b>29</b>	<b>8</b>	<b>6.419</b>
<b>% by vehicle group</b>	<b>20,8%</b>	<b>1,7%</b>	<b>11,8%</b>	<b>12,8%</b>	<b>65,7%</b>	<b>2,2%</b>	<b>1,0%</b>	<b>0,5%</b>	<b>0,1%</b>	<b>100,0%</b>

Source: CARE Database / EC

Date of query: 5-aug-2005

\* Data 2002

\*\* Data 2001

\*\*\* Data 1998

**Table 26: Number of fatalities aged 25 to 64 by mode of transport (in which the fatality was travelling) per country, 2003**

	pedes- trian	pedal cycle	moped	motor cycle	car or taxi	under 3.5 tonnes	heavy goods vehicle	bus or coach	agricultural tractor	Total
BE**	88	49	21	112	512	36	23	5	0	824
DK	28	20	20	21	129	12	2	4	0	228
EL	69	12	25	168	455	46	22	12	18	840
ES	318	41	136	294	1.895	232	142	17	10	3.106
FR	292	89	107	644	1.875	55	100	9	17	3.123
IE	25	2	0	41	82	8	4	0	0	166
IT***	227	139	248	342	1.998	0	180	8	14	3.218
LU*	4	1	0	0	35	0	3	0	0	41
NL	88	64	30	80	247	40	7	0	2	510
AT	53	29	21	81	263	23	11	0	4	481
PT	82	32	86	130	384	102	30	2	13	886
FI	26	13	4	13	112	12	9	0	1	190
SE*	31	17	3	23	200	7	10	0	2	283
UK*	271	72	4	457	833	60	53	12	0	1.816
<b>Total</b>	<b>1.602</b>	<b>580</b>	<b>705</b>	<b>2.406</b>	<b>9.020</b>	<b>633</b>	<b>596</b>	<b>69</b>	<b>81</b>	<b>15.712</b>
<b>% by vehicle group</b>	<b>10,2%</b>	<b>3,7%</b>	<b>4,5%</b>	<b>15,3%</b>	<b>57,4%</b>	<b>4,0%</b>	<b>3,8%</b>	<b>0,4%</b>	<b>0,5%</b>	<b>100,0%</b>

Source: CARE Database / EC

Date of query: 5-aug-2005

\* Data 2002

\*\* Data 2001

\*\*\* Data 1998

**Table 27: Number of fatalities aged 65+ by group of vehicle (in which the fatality was travelling) per country, 2003**

	pedes- trian	pedal cycle	moped	motor cycle	car or taxi	under 3.5 tonnes	heavy goods vehicle	bus or coach	agricultural tractor	Total
BE**	66	54	6	1	133	2	0	2	0	264
DK	20	20	6	0	46	1	0	6	0	99
EL	147	5	12	14	92	25	2	0	24	322
ES	306	16	36	2	395	31	5	3	10	835
FR	298	65	31	22	681	4	2	7	6	1.120
IE	22	4	0	0	21	1	3	0	0	53
IT***	466	180	142	13	512	0	26	2	5	1.379
LU*	3	0	0	0	2	0	0	0	0	5
NL	39	84	27	0	68	1	1	0	0	221
AT	72	20	10	5	79	2	0	0	4	197
PT	137	16	45	0	88	7	0	0	8	303
FI	24	21	3	0	45	1	0	0	2	96
SE*	30	20	1	2	83	0	0	3	0	139
UK*	293	21	3	9	307	4	2	7	1	655
<b>Total</b>	<b>1.922</b>	<b>526</b>	<b>322</b>	<b>68</b>	<b>2.552</b>	<b>79</b>	<b>41</b>	<b>30</b>	<b>60</b>	<b>5.688</b>
<b>% by vehicle group</b>	<b>33,8%</b>	<b>9,2%</b>	<b>5,7%</b>	<b>1,2%</b>	<b>44,9%</b>	<b>1,4%</b>	<b>0,7%</b>	<b>0,5%</b>	<b>1,1%</b>	<b>100,0%</b>

Source: CARE Database / EC

Date of query: 5-aug-2005

\* Data 2002

\*\* Data 2001

\*\*\* Data 1998

## 4.2 Modes of transport

### 4.2.1 Mode of transport by age of persons

**Table 28: Number of pedestrian fatalities by age per country, 2003**

	0-9	10-15	16-17	18-20	21-24	25-29	30-39	40-49	50-59	60-64	65-74	75+	Total
BE**	11	6	1	4	5	4	16	12	21	11	28	38	158
DK	1	2	1	1	4	4	6	5	4	1	6	14	49
EL	6	4	5	5	4	7	19	15	25	11	64	84	257
ES	22	20	11	21	20	39	71	88	82	38	112	193	786
FR	24	26	11	18	19	16	64	53	60	30	96	203	626
IE	6	2	0	2	3	3	7	3	11	3	8	14	64
IT***	26	15	10	9	23	38	45	54	73	53	203	265	844
LU*	1	0	0	0	0	0	0	2	0	0	2	1	6
NL	11	6	1	2	1	3	8	11	10	5	11	28	97
AT	4	4	2	2	3	1	4	13	16	11	23	49	132
PT	17	5	1	5	5	5	18	41	27	14	63	74	280
FI	5	2	1	1	2	5	5	4	8	2	6	18	59
SE*	3	1	1	1	3	3	4	3	7	2	7	23	58
UK*	40	43	21	35	50	44	82	77	86	29	82	211	808
<b>Total</b>	<b>177</b>	<b>136</b>	<b>65</b>	<b>105</b>	<b>141</b>	<b>171</b>	<b>350</b>	<b>381</b>	<b>431</b>	<b>209</b>	<b>711</b>	<b>1,215</b>	<b>4,224</b>
<b>% by age group</b>	<b>4,2%</b>	<b>3,2%</b>	<b>1,5%</b>	<b>2,5%</b>	<b>3,3%</b>	<b>4,1%</b>	<b>8,3%</b>	<b>9,0%</b>	<b>10,2%</b>	<b>4,9%</b>	<b>16,8%</b>	<b>28,8%</b>	<b>100,0%</b>

Source: CARE Database / EC

Date of query: 9-aug-2005

\* Data 2002

\*\* Data 2001

\*\*\* Data 1998

**Table 29: Number of pedal cyclist fatalities by age per country, 2003**

	0-9	10-15	16-17	18-20	21-24	25-29	30-39	40-49	50-59	60-64	65-74	75+	Total
BE**	3	11	4	6	1	3	5	16	17	8	29	25	130
DK	0	3	1	0	3	0	2	7	6	5	6	14	47
EL	0	3	0	0	1	2	4	3	3	0	4	1	21
ES	1	5	3	2	7	4	9	12	11	3	13	4	78
FR	5	18	10	6	5	12	14	21	29	13	31	34	201
IE	1	2	0	0	1	1	0	0	1	0	3	1	11
IT***	2	14	8	2	5	9	24	30	39	37	79	102	364
LU*	0	0	0	0	0	0	0	0	1	0	0	0	1
NL	6	19	6	5	4	4	10	10	23	17	33	51	188
AT	1	4	1	1	0	0	0	7	11	11	10	10	56
PT	1	5	0	2	2	3	6	10	5	9	8	8	63
FI	1	4	0	0	0	0	2	3	9	4	19	11	53
SE*		2	1	2	0	0	1	6	5	5	7	13	42
UK*	6	19	3	5	6	8	20	15	21	8	8	13	133
<b>Total</b>	<b>27</b>	<b>108</b>	<b>37</b>	<b>32</b>	<b>36</b>	<b>45</b>	<b>97</b>	<b>141</b>	<b>180</b>	<b>120</b>	<b>249</b>	<b>288</b>	<b>1,388</b>
<b>% by age group</b>	<b>2,0%</b>	<b>7,8%</b>	<b>2,6%</b>	<b>2,3%</b>	<b>2,6%</b>	<b>3,3%</b>	<b>7,0%</b>	<b>10,2%</b>	<b>13,0%</b>	<b>8,6%</b>	<b>18,0%</b>	<b>20,7%</b>	<b>100,0%</b>

Source: CARE Database / EC

Date of query: 9,12-aug-2005

\* Data 2002

\*\* Data 2001

\*\*\* Data 1998

**Table 30: Number of moped and motorcycle rider fatalities by age per country, 2003**

	0-9	10-15	16-17	18-20	21-24	25-29	30-39	40-49	50-59	60-64	65-74	75+	Total
BE**	0	0	14	11	34	23	51	41	7	5	7	0	194
DK	0	3	7	7	3	5	12	17	6	1	2	4	67
EL	0	5	21	40	53	61	62	40	12	5	16	10	331
ES	0	14	60	78	67	111	162	81	35	11	22	16	680
FR	0	35	101	114	157	155	302	192	64	8	26	29	1.200
IE	0	0	1	4	7	13	16	9	2	0	0	0	52
IT***	0	38	98	87	132	165	186	96	65	40	85	67	1.081
LU*	0	0	0	0	0	0	0	0	0	0	0	0	0
NL	0	1	23	7	15	25	41	21	14	6	5	22	180
AT	0	3	8	7	18	13	22	33	20	7	8	7	146
PT	0	0	4	13	52	59	71	41	20	13	29	16	321
FI	0	4	6	1	3	4	5	3	4	0	2	1	33
SE*	0	2	3	2	9	5	8	7	3	1	3	0	43
UK*	0	3	23	47	59	86	203	116	36	5	9	3	599
<b>Total</b>	<b>0</b>	<b>108</b>	<b>369</b>	<b>418</b>	<b>609</b>	<b>725</b>	<b>1.141</b>	<b>697</b>	<b>288</b>	<b>102</b>	<b>214</b>	<b>175</b>	<b>4.927</b>
<b>% by age group</b>	<b>0,0%</b>	<b>2,2%</b>	<b>7,5%</b>	<b>8,5%</b>	<b>12,4%</b>	<b>14,7%</b>	<b>23,2%</b>	<b>14,1%</b>	<b>5,8%</b>	<b>2,1%</b>	<b>4,3%</b>	<b>3,6%</b>	<b>100,0%</b>

Source: CARE Database / EC

Date of query: 28-jul-2005

\* Data 2002

\*\* Data 2001

\*\*\* Data 1998

**Table 31: Number of moped and motorcycle passenger fatalities by age per country, 2003**

	0-9	10-15	16-17	18-20	21-24	25-29	30-39	40-49	50-59	60-64	65-74	75+	Total
BE**	1	0	1	6	2	1	2	3	0	0	0	0	16
DK	0	1	0	0	0	0	0	0	0	0	0	0	1
EL	0	3	8	5	2	6	3	1	2	1	0	0	32
ES	0	10	15	8	15	11	10	4	1	0	0	1	83
FR	0	9	13	11	13	4	14	5	5	0	1	0	78
IE	0	0	0	1	1	0	1	0	0	0	0	0	3
IT***	2	9	13	23	11	18	12	5	3	0	2	1	110
LU*	0	0	0	0	0	0	0	0	0	0	0	0	0
NL	0	2	1	1	2	1	0	0	2	0	0	0	9
AT	0	1	2	0	0	3	3	0	1	0	0	0	10
PT	0	1	2	3	6	5	2	1	2	1	0	0	25
FI	0	1	0	0	0	1	0	0	0	0	0	0	2
SE*	0	3	0	0	1	0	0	0	2	0	0	0	6
UK*	0	0	4	3	6	5	3	4	2	1	0	0	29
<b>Total</b>	<b>3</b>	<b>40</b>	<b>59</b>	<b>61</b>	<b>59</b>	<b>55</b>	<b>50</b>	<b>23</b>	<b>20</b>	<b>3</b>	<b>3</b>	<b>2</b>	<b>404</b>
<b>% by age group</b>	<b>0,7%</b>	<b>9,9%</b>	<b>14,6%</b>	<b>15,1%</b>	<b>14,6%</b>	<b>13,6%</b>	<b>12,4%</b>	<b>5,7%</b>	<b>5,0%</b>	<b>0,7%</b>	<b>0,7%</b>	<b>0,5%</b>	<b>100,0%</b>

Source: CARE Database / EC

Date of query: 1-aug-2005

\* Data 2002

\*\* Data 2001

\*\*\* Data 1998



**Table 32: Number of car and taxi driver fatalities by age per country, 2003**

	0-9	10-15	16-17	18-20	21-24	25-29	30-39	40-49	50-59	60-64	65-74	75+	Total
BE**	0	0	1	44	100	103	131	96	70	19	47	49	662
DK	0	0	0	16	14	14	41	22	21	2	18	19	167
EL	0	0	5	36	66	74	96	103	74	21	31	18	527
ES	0	0	7	127	269	300	439	352	216	96	140	72	2.044
FR	0	1	4	216	407	309	480	344	314	85	212	231	2.636
IE	0	0	0	11	20	15	20	13	11	3	4	10	110
IT***	0	1	1	148	316	338	450	327	274	136	231	119	2.401
LU*	0	0	0	2	3	4	16	8	3	0	1	1	38
NL	0	0	1	41	50	41	70	51	33	14	21	23	345
AT	0	0	5	46	64	33	65	42	42	19	37	18	371
PT	0	1	1	16	63	56	97	56	46	19	43	11	412
FI	0	0	0	17	16	9	20	29	24	6	19	10	150
SE*	0	2	1	24	28	22	38	36	46	14	17	43	271
UK*	0	3	36	159	150	140	205	146	114	52	87	102	1.199
<b>Total</b>	<b>0</b>	<b>8</b>	<b>62</b>	<b>903</b>	<b>1.566</b>	<b>1.458</b>	<b>2.168</b>	<b>1.625</b>	<b>1.288</b>	<b>486</b>	<b>908</b>	<b>726</b>	<b>11.333</b>
<b>% by age group</b>	<b>0,0%</b>	<b>0,1%</b>	<b>0,5%</b>	<b>8,0%</b>	<b>13,8%</b>	<b>12,9%</b>	<b>19,1%</b>	<b>14,3%</b>	<b>11,4%</b>	<b>4,3%</b>	<b>8,0%</b>	<b>6,4%</b>	<b>100,0%</b>

Source: CARE Database / EC

Date of query: 1-aug-2005

\* Data 2002

\*\* Data 2001

\*\*\* Data 1998

**Table 33: Number of car and taxi passenger fatalities by age per country, 2003**

	0-9	10-15	16-17	18-20	21-24	25-29	30-39	40-49	50-59	60-64	65-74	75+	Total
BE**	23	11	16	33	23	38	24	12	16	3	18	19	237
DK	11	4	4	5	7	10	5	4	7	3	1	8	69
EL	17	11	9	27	39	19	22	21	13	12	24	19	237
ES	65	38	57	157	146	143	137	95	82	36	95	88	1.172
FR	77	46	59	151	138	69	96	67	72	41	114	125	1.073
IE	5	1	8	11	9	3	10	1	5	1	3	4	61
IT***	43	36	37	125	155	111	140	81	91	50	104	57	1.115
LU*	1	1	3	4	1	2	1	1	0	0	0	0	14
NL	12	8	14	24	17	9	12	8	6	3	11	13	137
AT	9	14	15	15	13	17	12	12	15	6	11	13	153
PT	10	20	13	20	29	29	23	32	18	9	15	18	242
FI	6	3	3	8	7	3	4	11	4	2	3	13	67
SE*	4	7	4	18	8	10	18	5	5	6	8	15	108
UK*	32	43	73	106	79	49	52	26	35	14	38	80	633
<b>Total</b>	<b>315</b>	<b>243</b>	<b>315</b>	<b>704</b>	<b>671</b>	<b>512</b>	<b>556</b>	<b>376</b>	<b>369</b>	<b>186</b>	<b>445</b>	<b>472</b>	<b>5.318</b>
<b>% by age group</b>	<b>5,9%</b>	<b>4,6%</b>	<b>5,9%</b>	<b>13,2%</b>	<b>12,6%</b>	<b>9,6%</b>	<b>10,5%</b>	<b>7,1%</b>	<b>6,9%</b>	<b>3,5%</b>	<b>8,4%</b>	<b>8,9%</b>	<b>100,0%</b>

Source: CARE Database / EC

Date of query: 2-aug-2005

\* Data 2002

\*\* Data 2001

\*\*\* Data 1998

**Table 34: Number of fatalities in heavy goods vehicles and lorries < 3,5t by age per country, 2003**

	0-9	10-15	16-17	18-20	21-24	25-29	30-39	40-49	50-59	60-64	65-74	75+	Total
BE**	3	1	1	2	7	6	20	20	6	7	1	1	76
DK	0	0	0	2	5	3	3	4	1	3	1	0	22
EL	2	2	1	5	6	4	20	20	17	7	19	8	112
ES	7	5	2	16	32	58	116	99	70	31	21	15	477
FR	2	0	2	7	18	16	52	44	36	7	3	3	192
IE	0	0	1	4	6	1	6	4	1	0	3	1	27
IT***	0	0	7	2	15	31	39	51	41	18	22	4	249
LU*	0	0	0	0	0	0	2	0	1	0	0	0	3
NL	2	1	1	5	5	6	13	14	11	3	1	1	63
AT	0	1	0	1	4	5	12	10	6	1	2	0	42
PT	0	2	1	3	24	25	34	34	32	7	4	3	170
FI	0	0	0	1	1	3	2	9	6	1	1	0	24
SE*	0	1	0	2	1	2	5	5	4	1	0	0	21
UK*	0	0	2	6	7	14	34	29	25	11	5	1	135
<b>Total</b>	<b>16</b>	<b>13</b>	<b>18</b>	<b>56</b>	<b>131</b>	<b>174</b>	<b>358</b>	<b>343</b>	<b>257</b>	<b>97</b>	<b>83</b>	<b>37</b>	<b>1.613</b>
<b>% by age group</b>	<b>1,0%</b>	<b>0,8%</b>	<b>1,1%</b>	<b>3,5%</b>	<b>8,1%</b>	<b>10,8%</b>	<b>22,2%</b>	<b>21,3%</b>	<b>15,9%</b>	<b>6,0%</b>	<b>5,1%</b>	<b>2,3%</b>	<b>100,0%</b>

Source: CARE Database / EC

Date of query: 29-jul-2005

\* Data 2002

\*\* Data 2001

\*\*\* Data 1998

**Table 35: Number of fatalities in buses by age per country, 2003**

	0-9	10-15	16-17	18-20	21-24	25-29	30-39	40-49	50-59	60-64	65-74	75+	Total
BE**	0	1	0	0	1	1	1	2	1	0	2	0	9
DK	0	0	0	0	0	0	0	2	1	1	1	5	10
EL	2	2	19	0	3	8	0	2	2	0	0	0	38
ES	0	1	0	2	0	2	3	2	8	2	2	1	27
FR	0	0	0	0	0	1	0	1	3	4	4	3	17
IE	0	0	0	0	0	0	0	0	0	0	0	0	0
IT***	0	1	0	0	0	0	1	5	2	0	1	1	11
LU*	0	0	0	0	0	0	0	0	0	0	0	0	0
NL	0	0	0	0	0	0	0	0	0	0	0	0	0
AT	0	0	0	0	0	0	0	0	0	0	0	0	0
PT	0	0	0	0	0	0	0	0	1	1	0	0	2
FI	0	0	0	0	0	0	0	0	0	0	0	0	0
SE*	2	0	0	0	0	0	0	0	0	0	1	2	5
UK*	0	3	0	0	4	0	4	3	2	3	3	4	26
<b>Total</b>	<b>4</b>	<b>8</b>	<b>19</b>	<b>2</b>	<b>8</b>	<b>12</b>	<b>9</b>	<b>17</b>	<b>20</b>	<b>11</b>	<b>14</b>	<b>16</b>	<b>145</b>
<b>% by age group</b>	<b>2,8%</b>	<b>5,5%</b>	<b>13,1%</b>	<b>1,4%</b>	<b>5,5%</b>	<b>8,3%</b>	<b>6,2%</b>	<b>11,7%</b>	<b>13,8%</b>	<b>7,6%</b>	<b>9,7%</b>	<b>11,0%</b>	<b>100,0%</b>

Source: CARE Database / EC

Date of query: 29-jul-2005

\* Data 2002

\*\* Data 2001

\*\*\* Data 1998

**Table 36: Number of fatalities by person class and age band per country, 2003**

	Driver				Passenger				Pedestrian			
	0 to 15	16 to 24	25 to 64	>64	0 to 15	16 to 24	25 to 64	>64	0 to 15	16 to 24	25 to 64	>64
BE**	14	225	651	158	40	84	109	40	17	10	64	66
DK	6	56	176	64	16	18	32	15	3	6	20	20
EL	8	228	638	126	41	122	125	48	10	14	77	148
ES	20	651	2.173	308	129	426	610	204	43	52	318	305
FR	59	1.039	2.495	573	134	396	405	248	51	47	223	299
IE	3	51	117	24	6	37	22	7	8	5	27	22
IT***	55	815	2.419	731	92	375	535	180	41	41	264	468
LU*	0	5	34	2	2	8	5	0	1	0	2	3
NL	26	160	423	158	28	62	49	24	17	4	37	39
AT	11	154	359	100	26	46	77	25	8	7	45	72
PT	6	174	633	127	34	82	149	39	22	11	106	138
FI	7	47	139	54	10	18	27	18	7	4	24	24
SE*	6	74	215	83	17	32	49	26	4	5	19	30
UK*	30	496	1.277	235	79	285	221	127	83	106	318	293
<b>Total</b>	<b>251</b>	<b>4.175</b>	<b>11.749</b>	<b>2.743</b>	<b>654</b>	<b>1.991</b>	<b>2.415</b>	<b>1.001</b>	<b>315</b>	<b>312</b>	<b>1.544</b>	<b>1.927</b>
<b>% by age group</b>	<b>1,3%</b>	<b>22,1%</b>	<b>62,1%</b>	<b>14,5%</b>	<b>10,8%</b>	<b>32,8%</b>	<b>39,8%</b>	<b>16,5%</b>	<b>7,7%</b>	<b>7,6%</b>	<b>37,7%</b>	<b>47,0%</b>

Source: CARE Database / EC

Date of query: 29-jul-2005

\* Data 2002

\*\* Data 2001

\*\*\* Data 1998

#### 4.2.2 Mode of transport by type of area

**Table 37: Number of fatalities by mode of transport (in which the fatality was travelling) and type of area per country, 2003**

	pedestrian		pedal cycle		moped		motorcycle		car or taxi	
	inside urban area	outside urban area	inside urban area	outside urban area	inside urban area	outside urban area	inside urban area	outside urban area	inside urban area	outside urban area
BE**	108	50	53	77	26	37	46	101	200	699
DK	23	26	30	17	16	27	8	17	34	202
EL	185	72	15	6	34	19	212	98	226	535
ES	363	424	15	63	171	220	101	266	239	2.977
FR	432	193	92	109	169	224	339	544	607	3.102
IE <sup>2</sup>	39	25	0	11	-	-	17	38	30	145
IT***1	667	177	221	143	453	222	249	267	1.109	2.406
LU*1	5	1	0	1	0	0	0	0	15	25
NL	64	33	114	74	55	39	22	73	78	405
AT	88	44	25	31	21	26	19	90	56	468
PT	186	95	48	15	95	68	99	83	186	467
FI	34	25	0	0	0	0	0	0	0	0
SE*	33	25	27	15	4	8	10	27	68	311
UK*2	586	222	72	61	10	11	238	369	480	1.352
<b>Total</b>	<b>2.813</b>	<b>1.412</b>	<b>712</b>	<b>623</b>	<b>1.053</b>	<b>902</b>	<b>1.360</b>	<b>1.974</b>	<b>3.328</b>	<b>13.095</b>
<b>% by area</b>	<b>66,6%</b>	<b>33,4%</b>	<b>53,4%</b>	<b>46,6%</b>	<b>53,9%</b>	<b>46,1%</b>	<b>40,8%</b>	<b>59,2%</b>	<b>20,3%</b>	<b>79,7%</b>

	lorry, under 3.5 tonnes		heavy goods vehicle		bus or coach		agricultural tractor		Total
	inside urban area	outside urban area	inside urban area	outside urban area	inside urban area	outside urban area	inside urban area	outside urban area	
BE**	13	35	2	26	2	7	0	0	1.486
DK	2	18	1	1	0	10	0	0	432
EL	22	64	4	22	1	37	13	33	1.605
ES	19	298	2	158	3	24	1	22	5.400
FR	10	70	7	94	1	17	4	21	6.058
IE <sup>2</sup>	2	17	0	8	0	0	0	0	339
IT***1	17	60	12	64	9	4	6	16	6.314
LU*1	-	-	0	3	0	0	0	0	62
NL	9	46	1	7	0	0	2	3	1.028
AT	4	24	1	13	0	0	4	6	931
PT	24	113	7	26	1	1	11	14	1.542
FI	0	0	0	0	0	0	0	0	379
SE*	1	7	1	12	1	4	0	3	560
UK*2	12	60	5	58	13	13	0	1	3.581
<b>Total</b>	<b>134</b>	<b>812</b>	<b>43</b>	<b>492</b>	<b>31</b>	<b>117</b>	<b>42</b>	<b>119</b>	<b>29.716</b>
<b>% by area</b>	<b>14,2%</b>	<b>85,8%</b>	<b>8,1%</b>	<b>91,9%</b>	<b>20,9%</b>	<b>79,1%</b>	<b>26,1%</b>	<b>79,4%</b>	<b>100,0%</b>

Source: CARE Database / EC

Date of query: 28-jul-2005

\* Data 2002

\*\* Data 2001

\*\*\* Data 1998

<sup>1</sup> heavy goods vehicles include lorries < 3,5t

<sup>2</sup> motorcycles including mopeds

## 4.3 Accident characteristics

### 4.3.1 Various periods of time (month, day of week, hour of day)

Table 38: Number of fatalities by month per country, 2003

	Jan	Feb	Mar	Apr	May	Jun	Jul	Aug	Sep	Oct	Nov	Dec	Total
BE**	118	93	106	109	121	137	153	140	135	124	137	113	1.486
DK	30	32	27	23	43	34	53	36	32	37	46	39	432
EL	111	119	115	119	122	139	181	161	153	132	132	121	1.605
ES	405	381	398	409	395	491	524	595	445	435	452	468	5.400
FR	415	384	475	437	549	582	602	592	546	539	443	494	6.058
IE	20	21	33	23	38	37	32	26	20	33	29	21	339
IT***	530	431	514	501	618	585	662	618	631	462	337	424	6.314
LU*	2	6	1	3	3	7	6	7	6	7	9	5	62
NL	95	66	93	80	76	105	97	100	82	78	87	69	1.028
AT	57	51	47	78	89	111	106	92	98	58	64	80	931
PT	125	96	119	122	136	125	139	157	141	139	115	128	1.542
FI	22	23	25	26	29	26	32	43	42	33	32	46	379
SE*	40	46	42	38	51	69	64	62	34	40	41	33	560
UK*	249	243	314	256	284	273	301	320	345	330	314	352	3.581
<b>Total</b>	<b>2.219</b>	<b>1.992</b>	<b>2.309</b>	<b>2.224</b>	<b>2.554</b>	<b>2.721</b>	<b>2.952</b>	<b>2.949</b>	<b>2.710</b>	<b>2.447</b>	<b>2.238</b>	<b>2.393</b>	<b>29.717</b>
<b>% by month</b>	<b>7,5%</b>	<b>6,7%</b>	<b>7,8%</b>	<b>7,5%</b>	<b>8,6%</b>	<b>9,2%</b>	<b>9,9%</b>	<b>9,9%</b>	<b>9,1%</b>	<b>8,2%</b>	<b>7,5%</b>	<b>8,1%</b>	<b>100,0%</b>

Source: CARE Database / EC

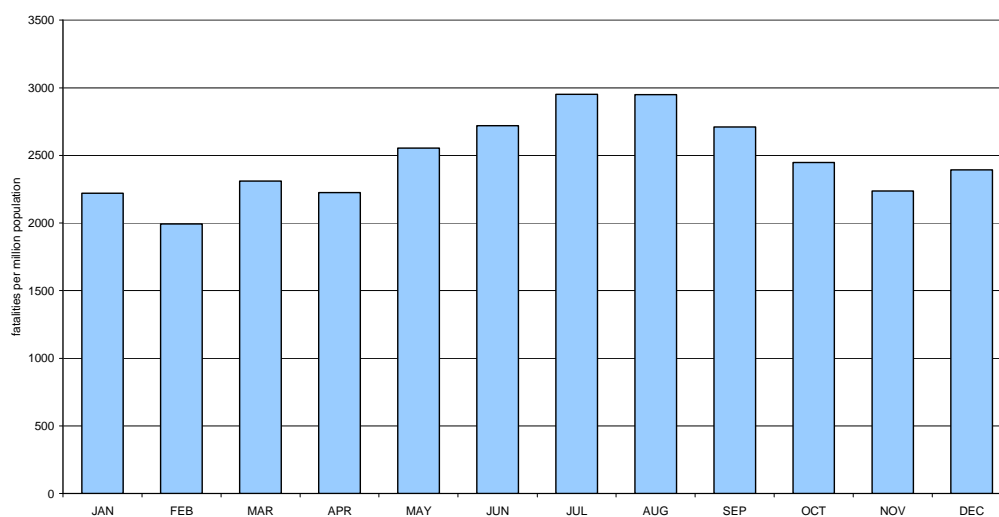
Date of query: 5-aug-2005

\* Data 2002

\*\* Data 2001

\*\*\* Data 1998

Figure 17: Number of fatalities by month EU14, 2003\*



Source: CARE database / EC  
Date of query: 5-aug-2005

\* IT: 1998, BE: 2001, LU, SE & UK: 2002

**Table 39: Number of total fatalities by day of week per country 2003**

	Mon	Tue	Wed	Thu	Fri	Sat	Sun	Total
BE**	182	182	198	183	223	266	252	1.486
DK	64	46	52	60	78	66	66	432
EL	220	192	209	215	225	230	314	1.605
ES	667	636	665	671	775	976	1.010	5.400
FR	789	731	762	746	940	1.043	1.046	6.058
IE	49	30	30	43	54	59	68	339
IT***	875	807	755	860	873	1.061	1.082	6.314
LU*	9	5	9	7	11	16	5	62
NL	151	121	129	134	171	175	147	1.028
AT	119	123	119	129	175	130	136	931
PT	193	174	187	197	220	267	304	1.542
FI	42	59	55	45	54	69	55	379
SE*	71	81	82	79	91	92	64	560
UK*	446	457	492	470	611	575	530	3.581
<b>Total</b>	<b>3.877</b>	<b>3.644</b>	<b>3.744</b>	<b>3.839</b>	<b>4.501</b>	<b>5.025</b>	<b>5.079</b>	<b>29.717</b>
<b>% by day</b>	<b>13,0%</b>	<b>12,3%</b>	<b>12,6%</b>	<b>12,9%</b>	<b>15,1%</b>	<b>16,9%</b>	<b>17,1%</b>	<b>100,0%</b>

Source: CARE Database / EC

Date of query: 11-aug-2005

\* Data 2002

\*\* Data 2001

\*\*\* Data 1998

**Table 40: Number of fatalities by day of week per country 2003, drivers**

	Mon	Tue	Wed	Thu	Fri	Sat	Sun	Total
BE**	129	134	146	130	161	181	173	1.054
DK	41	29	39	39	53	49	52	302
EL	140	118	135	148	134	140	195	1.010
ES	408	389	435	408	458	551	549	3.197
FR	548	532	560	548	673	681	687	4.228
IE	28	20	18	29	25	38	39	198
IT***	583	551	489	568	590	666	681	4.129
LU*	6	4	7	5	7	8	4	41
NL	115	93	98	96	133	131	101	767
AT	77	83	81	94	129	81	79	624
PT	123	104	122	120	140	160	181	950
FI	28	38	38	36	33	46	28	247
SE*	50	59	61	56	51	57	44	378
UK*	260	264	308	289	318	319	295	2.053
<b>Total</b>	<b>2.536</b>	<b>2.418</b>	<b>2.537</b>	<b>2.566</b>	<b>2.905</b>	<b>3.108</b>	<b>3.108</b>	<b>19.178</b>
<b>% by day</b>	<b>13,2%</b>	<b>12,6%</b>	<b>13,2%</b>	<b>13,4%</b>	<b>15,1%</b>	<b>16,2%</b>	<b>16,2%</b>	<b>100,0%</b>

Source: CARE Database / EC

Date of query: 29-jul-2005

\* Data 2002

\*\* Data 2001

\*\*\* Data 1998

**Table 41: Number of fatalities by day of week per country 2003, passengers**

	Mon	Tue	Wed	Thu	Fri	Sat	Sun	Total
BE**	30	27	37	24	28	61	67	274
DK	16	10	7	11	13	14	10	81
EL	39	44	36	32	45	59	83	338
ES	142	142	127	148	186	311	360	1.416
FR	155	122	116	99	164	256	292	1.204
IE	10	7	5	8	12	15	15	75
IT***	155	130	135	150	162	262	295	1.289
LU*	1	0	2	1	3	8	0	15
NL	26	15	12	27	20	29	34	163
AT	12	17	21	18	30	35	42	175
PT	33	36	23	33	36	68	82	312
FI	4	11	7	2	14	15	20	73
SE*	15	17	11	15	25	24	17	124
UK*	94	84	74	68	134	126	140	720
<b>Total</b>	<b>732</b>	<b>662</b>	<b>613</b>	<b>636</b>	<b>872</b>	<b>1.283</b>	<b>1.457</b>	<b>6.259</b>
<b>% by day</b>	<b>11,7%</b>	<b>10,6%</b>	<b>9,8%</b>	<b>10,2%</b>	<b>13,9%</b>	<b>20,5%</b>	<b>23,3%</b>	<b>100,0%</b>

Source: CARE Database / EC

Date of query: 1-aug-2005

\* Data 2002

\*\* Data 2001

\*\*\* Data 1998

**Table 42: Number of fatalities by day of week per country 2003, pedestrians**

	Mon	Tue	Wed	Thu	Fri	Sat	Sun	Total
BE**	23	21	15	29	34	24	12	158
DK	7	7	6	10	12	3	4	49
EL	41	30	38	35	46	31	36	257
ES	117	105	103	115	131	115	101	786
FR	86	78	86	99	103	107	68	626
IE	11	3	7	6	17	6	14	64
IT***	128	121	125	130	118	121	101	844
LU*	2	1	0	1	1	0	1	6
NL	10	13	19	11	18	15	11	97
AT	30	23	17	17	16	14	15	132
PT	36	34	42	44	43	39	41	280
FI	10	10	10	7	7	8	7	59
SE*	6	5	10	8	15	11	3	58
UK*	92	109	110	113	159	130	95	808
<b>Total</b>	<b>599</b>	<b>560</b>	<b>588</b>	<b>625</b>	<b>720</b>	<b>624</b>	<b>509</b>	<b>4.224</b>
<b>% by day</b>	<b>14,2%</b>	<b>13,3%</b>	<b>13,9%</b>	<b>14,8%</b>	<b>17,0%</b>	<b>14,8%</b>	<b>12,1%</b>	<b>100,0%</b>

Source: CARE Database / EC

Date of query: 25-jul-2005

\* Data 2002

\*\* Data 2001

\*\*\* Data 1998

**Table 43: Number of fatalities by hour of day per country, 2003**

	0	1	2	3	4	5	6	7	8	9	10	11	12
BE**	54	68	64	56	44	53	54	57	52	38	68	40	51
DK	19	7	14	7	7	14	14	16	8	8	18	32	29
EL	64	50	57	43	65	64	67	70	55	57	51	46	45
ES	146	158	159	134	127	128	210	245	257	220	174	225	231
FR	168	180	146	135	223	231	204	257	264	202	231	236	225
IE	20	19	10	16	13	5	6	14	8	6	9	14	21
IT***	162	247	229	178	195	160	140	213	218	301	257	261	258
LU*	5	2	3	3	4	0	3	2	3	1	1	0	1
NL	25	25	19	19	15	27	29	52	41	33	56	50	44
AT	24	23	10	23	23	36	42	33	29	28	38	40	44
PT	64	49	39	34	42	38	50	74	57	38	54	73	60
FI	10	12	8	9	7	6	6	13	11	7	23	21	27
SE*	17	12	15	14	16	10	15	22	16	25	26	27	30
UK*	125	99	93	62	43	57	97	141	124	108	128	144	177
<b>Total</b>	<b>903</b>	<b>951</b>	<b>866</b>	<b>733</b>	<b>824</b>	<b>829</b>	<b>937</b>	<b>1.209</b>	<b>1.143</b>	<b>1.072</b>	<b>1.134</b>	<b>1.209</b>	<b>1.243</b>
<b>% by hour</b>	<b>3,0%</b>	<b>3,2%</b>	<b>2,9%</b>	<b>2,5%</b>	<b>2,8%</b>	<b>2,8%</b>	<b>3,2%</b>	<b>4,1%</b>	<b>3,8%</b>	<b>3,6%</b>	<b>3,8%</b>	<b>4,1%</b>	<b>4,2%</b>

	13	14	15	16	17	18	19	20	21	22	23	Total
BE**	59	60	61	85	83	90	89	74	54	69	59	1.486
DK	15	20	37	34	34	22	14	15	16	21	11	432
EL	54	81	80	85	81	85	108	69	74	77	77	1.605
ES	250	277	239	254	277	274	378	317	267	266	188	5.400
FR	240	318	385	373	424	420	310	275	223	189	199	6.058
IE	6	10	7	22	25	12	19	24	13	16	11	339
IT***	287	299	317	359	344	409	381	301	250	212	230	6.314
LU*	3	4	6	2	4	3	3	2	2	3	2	62
NL	45	66	84	66	86	61	38	38	35	42	32	1.028
AT	63	47	57	53	75	51	50	42	34	25	41	931
PT	70	87	67	75	100	122	109	79	63	55	44	1.542
FI	26	26	30	31	18	23	17	16	15	10	7	379
SE*	28	20	46	52	32	26	28	25	13	15	15	560
UK*	181	158	211	236	231	215	221	180	189	170	191	3.581
<b>Total</b>	<b>1.327</b>	<b>1.473</b>	<b>1.627</b>	<b>1.727</b>	<b>1.814</b>	<b>1.813</b>	<b>1.765</b>	<b>1.457</b>	<b>1.248</b>	<b>1.170</b>	<b>1.107</b>	<b>29.717</b>
<b>% by hour</b>	<b>4,5%</b>	<b>5,0%</b>	<b>5,5%</b>	<b>5,8%</b>	<b>6,1%</b>	<b>6,1%</b>	<b>5,9%</b>	<b>4,9%</b>	<b>4,2%</b>	<b>3,9%</b>	<b>3,7%</b>	<b>100,0%</b>

Source: CARE Database / EC

Date of query: 26-jul-2005

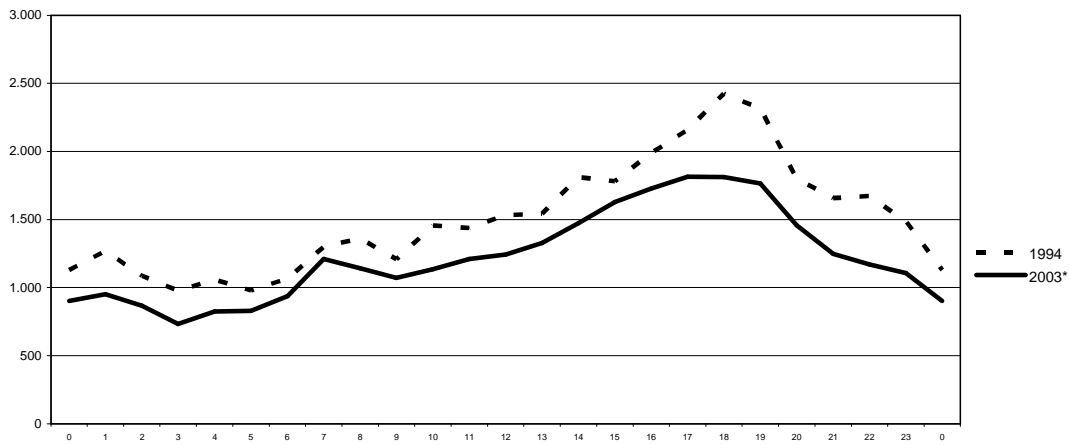
\* Data 2002

\*\* Data 2001

\*\*\* Data 1998



**Figure 18: Number of fatalities by hour of day EU14: 1994 and 2003\***



Source: CARE Database / EC  
 Date of query: 27-jul-2005  
 \* or last available data

\* IT: 1998, BE: 2001, LU, SE & UK: 2002

**Table 44: Number of pedestrian fatalities by hour of day per country, 2003**

	0	1	2	3	4	5	6	7	8	9	10	11	12
BE**	3	3	2	2	3	2	4	7	6	5	14	4	3
DK	3	0	2	2	1	1	2	0	1	0	5	2	5
EL	6	4	7	5	4	5	9	14	8	15	12	11	8
ES	25	19	13	21	18	11	27	33	29	23	32	31	46
FR	10	10	12	13	16	18	12	15	30	25	44	39	21
IE	2	7	3	2	1		2	3		3	4	2	6
IT***	12	20	10	11	6	5	10	28	31	40	36	29	33
LU*	0	0	0	0	1	0	0	0	1	0	0	0	0
NL	4	1	2	0	0	3	0	2	3	3	8	4	7
AT	5	2	2	3	2	2	4	2	3	5	7	8	4
PT	9	6	5	3	2	2	3	9	8	10	10	18	5
FI	2	4	1	0	1	1	1	0	2	3	2	3	4
SE*	0	1	4	1	0	0	0	3	0	3	2	3	4
UK*	25	25	19	8	9	7	7	14	18	27	31	36	39
<b>Total</b>	<b>105</b>	<b>102</b>	<b>81</b>	<b>71</b>	<b>65</b>	<b>57</b>	<b>81</b>	<b>129</b>	<b>140</b>	<b>162</b>	<b>207</b>	<b>191</b>	<b>185</b>
<b>% by hour</b>	<b>2,5%</b>	<b>2,4%</b>	<b>1,9%</b>	<b>1,7%</b>	<b>1,5%</b>	<b>1,4%</b>	<b>1,9%</b>	<b>3,1%</b>	<b>3,3%</b>	<b>3,8%</b>	<b>4,9%</b>	<b>4,5%</b>	<b>4,4%</b>

	13	14	15	16	17	18	19	20	21	22	23	Total
BE**	3	6	5	12	11	26	17	8	6	2	4	158
DK	1	1	3	1	7	2	1	2	0	4	3	49
EL	10	9	12	9	11	17	21	18	15	17	10	257
ES	23	23	27	28	28	41	84	75	53	48	30	786
FR	16	32	44	25	51	68	49	30	21	16	12	626
IE	2	2	2	4	6	1	2	4	4	0	1	64
IT***	26	26	36	42	57	105	82	67	49	34	33	844
LU*	1	0	2	0	0	0	1	0	0	0	0	6
NL	3	5	6	4	15	7	4	6	3	6	1	97
AT	8	3	6	5	15	15	11	10	3	1	6	132
PT	11	11	13	9	21	42	32	26	10	11	2	280
FI	1	5	2	7	5	6	4	2	1	0	2	59
SE*	3	1	4	6	5	7	5	3	1	1	1	58
UK*	38	29	43	66	59	66	60	39	51	37	55	808
<b>Total</b>	<b>146</b>	<b>153</b>	<b>204</b>	<b>218</b>	<b>290</b>	<b>402</b>	<b>372</b>	<b>290</b>	<b>216</b>	<b>178</b>	<b>161</b>	<b>4.225</b>
<b>% by hour</b>	<b>3,5%</b>	<b>3,6%</b>	<b>4,8%</b>	<b>5,2%</b>	<b>6,9%</b>	<b>9,5%</b>	<b>8,8%</b>	<b>6,9%</b>	<b>5,1%</b>	<b>4,2%</b>	<b>3,8%</b>	<b>100,0%</b>

Source: CARE Database / EC

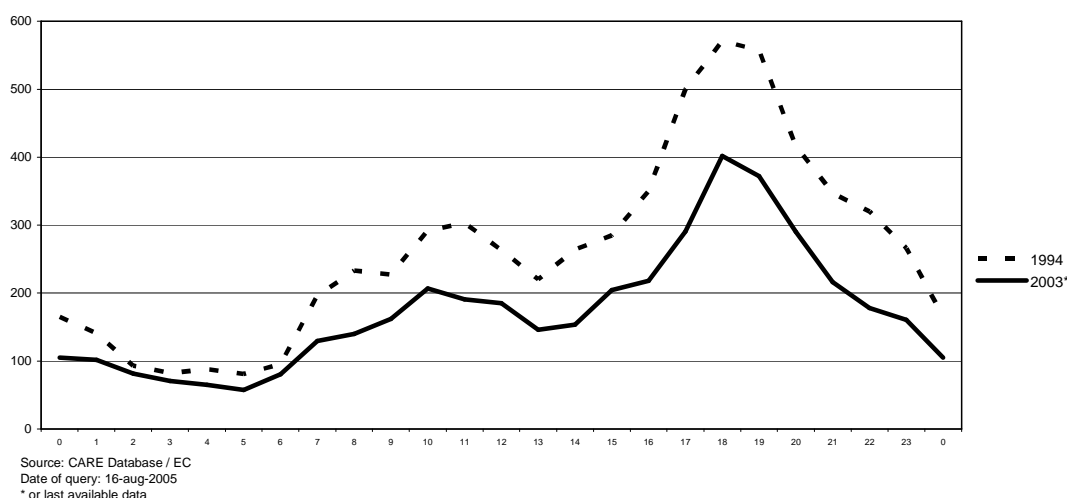
Date of query: 12.16-aug-2005

\* Data 2002

\*\* Data 2001

\*\*\* Data 1998

From 17 fatalities the hour of accident is unknown

**Figure 19: Number of pedestrian fatalities by hour of day, EU 14: 1994 and 2003\***


### 4.3.2 Type of area/road

**Table 45: Number of fatalities by type of area and road per country, 2003**

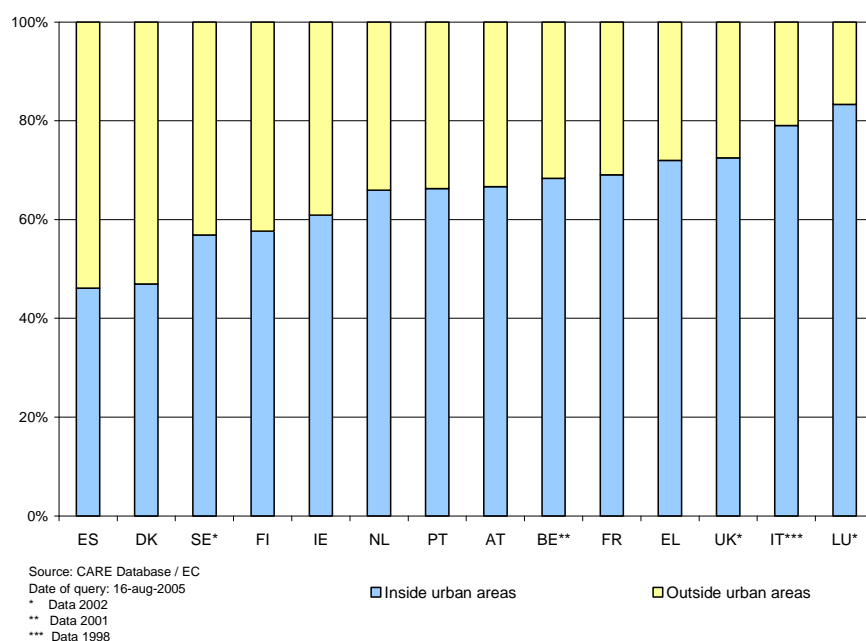
	Inside urban areas	Outside urban area			Total
		Motorway	No motorway	Unknown	
BE**	453	192	841	0	1.486
DK	114	21	0	297	432
EL	716	58	276	555	1.605
ES	919	369	4.111	0	5.400
FR	1.667	439	3.952	0	6.058
IE	88	7	238	0	339
IT***	2.793	711	2.809	0	6.314
LU*	20	0	30	0	62
NL	346	151	531	0	1.028
AT	223	106	602	0	931
PT	659	127	757	0	1.542
FI	101	0	278	0	379
SE*	146	27	387	0	560
UK*	1.421	226	1.934	0	3.581
<b>Total</b>	<b>9.666</b>	<b>2.434</b>	<b>16.747</b>	<b>852</b>	<b>29.716</b>
<b>% by road type</b>	<b>32,5%</b>	<b>8,2%</b>	<b>56,4%</b>	<b>2,9%</b>	<b>100,0%</b>

Source: CARE Database / EC  
Date of query: 3-aug-2005  
\* Data 2002  
\*\* Data 2001  
\*\*\* Data 1998

**Table 46: Number of pedestrian fatalities by type of road and area per country, 2003**

	Inside urban areas	Outside urban area			Total
		Motorway	No motorway	Unknown	
BE**	108	7	43	0	158
DK	23	0	0	26	49
EL	185	7	20	45	257
ES	363	36	388	0	786
FR	432	35	159	0	626
IE	39	0	25	0	64
IT***	667	13	164	0	844
LU*	5	0	1	0	6
NL	64	7	26	0	97
AT	88	9	35	0	132
PT	186	11	83	0	280
FI	34	0	25	0	59
SE*	33	4	21	0	58
UK*	586	23	199	0	808
<b>Total</b>	<b>2.813</b>	<b>152</b>	<b>1.188</b>	<b>71</b>	<b>4.225</b>
<b>% by road type</b>	<b>66,6%</b>	<b>3,6%</b>	<b>28,1%</b>	<b>1,7%</b>	<b>100,0%</b>

Source: CARE Database / EC  
 Date of query: 12,16-aug-2005  
 \* Data 2002  
 \*\* Data 2001  
 \*\*\* Data 1998

**Figure 20: Number of pedestrian fatalities by type of road and area per country, 2003**


### 4.3.3 Type of junction

**Table 47: Number of fatalities by type of junction per country, 2003**

	Not at junction	At junction					Not defined	Total
		crossroad	level crossing	t or y junction	other junction	roundabout		
BE**	1.129	0	2	0	345	10	0	1.486
DK	310	64	1	46	9	2	0	432
EL	-	-	-	-	-	-	1.605	1.605
ES	4.593	322	0	309	100	74	0	5.400
FR	5.083	433	32	400	79	31	0	6.058
IE	0	15	0	46	5	4	269	339
IT***	4.985	717	3	0	562	47	0	6.314
LU*	54	6	0	2	0	0	0	62
NL	704	161	29	122	0	9	0	1.028
AT	528	103	27	31	0	0	242	931
PT	1.349	66	2	101	0	17	7	1.542
FI	296	10	0	0	73	0	0	379
SE*	385	65	8	82	11	5	4	560
UK*	2.294	220	0	743	258	66	0	3.581
EU-14	21.710	5.877					2.127	29.716
% by junction	73,1%	19,8%					7,2%	100,0%

Source: CARE Database / EC

Date of query: 28-jul-2005

\* Data 2002

\*\* Data 2001

\*\*\* Data 1998

**Table 48: Number of pedestrian fatalities by type of junction per country, 2003**

	Not at junction	At junction					Not defined	Total
		crossroad	level crossing	t or y junction	other junction	roundabout		
BE**	125	0	1	0	31	1	0	158
DK	40	1	0	7	1	0	0	49
EL	-	-	-	-	-	-	257	257
ES	662	62	0	41	14	7	0	786
FR	555	22	0	34	13	2	0	626
IE		2	0	15	1	3	43	64
IT***	677	86	0	0	75	5	0	844
LU*	4	2	0	0	0	0	0	6
NL	71	15	2	8	0	1	0	97
AT	75	19	4	5	0	0	29	132
PT	255	11	0	9	0	1	3	280
FI	43	0	0	0	16	0	0	59
SE*	33	9	0	12	1	1	2	58
UK*	405	79	0	252	63	9	0	808
Total	2.945	945					334	4.224
% by junction	69,7%	22,4%					7,9%	100,0%

Source: CARE Database / EC

Date of query: 12.16-aug-2005

\* Data 2002

\*\* Data 2001

\*\*\* Data 1998

### 4.3.4 Weather conditions

**Table 49: Number of fatalities by weather conditions per country, 2003**

	dry	fog or mist	other	rain	snow, sleet, hail	strong wind	Total
BE**	1.168	10	12	252	18	4	1.486
DK	362	10	0	47	7	4	432
EL	1.344	5	40	197	7	12	1.605
ES	4.483	54	103	693	21	45	5.400
FR	0	96	5.278	599	53	32	6.058
IE	264	10	4	47	0	2	339
IT***	4.937	84	609	650	20	13	6.314
LU*	21	0	0	18	0	0	62
NL	909	16	0	75	8	3	1.028
AT	805	12	0	84	24	6	931
PT	1.232	26	0	276	3	2	1.542
FI	292	9	0	39	20	0	379
SE*	470	11	0	35	28	0	560
UK*	2.968	45	52	479	1	0	3.581
<b>EU 14</b>	<b>19.256</b>	<b>389</b>	<b>6.098</b>	<b>3.491</b>	<b>211</b>	<b>123</b>	<b>29.716</b>
<b>% by wheather</b>	<b>64,8%</b>	<b>1,3%</b>	<b>20,5%</b>	<b>11,7%</b>	<b>0,7%</b>	<b>0,4%</b>	<b>100,0%</b>

Source: CARE Database / EC

Date of query: 28-jul-2005

\* Data 2002

\*\* Data 2001

\*\*\* Data 1998

## 5 Fatal accidents 2003

### 5.1 Various periods of time (month, day of week, hour of day)

**Table 50: Number of fatal accidents<sup>1</sup> by month per country, 2003**

	Jan	Feb	Mar	Apr	May	Jun	Jul	Aug	Sep	Oct	Nov	Dec	Total
BE**	106	88	95	105	117	128	136	128	124	119	128	104	1.378
DK	29	29	24	23	41	28	36	34	30	33	40	35	382
EL*	101	98	103	87	109	123	155	138	138	117	122	109	1.400
ES	324	293	301	294	296	375	393	437	342	340	339	350	4.084
FR	360	329	399	376	451	493	518	494	466	462	392	428	5.168
IE	17	21	30	21	32	31	25	24	17	32	30	21	301
IT***	443	365	437	417	517	505	542	511	524	392	299	352	5.304
LU*	2	4	1	3	3	7	3	6	4	7	7	5	52
NL	89	59	86	66	71	98	85	86	78	73	83	66	940
AT	50	49	41	71	80	99	92	87	91	52	62	74	848
PT	97	78	98	102	112	99	109	120	115	106	87	96	1.219
FI	19	22	22	22	28	24	30	39	37	32	29	42	346
SE*	30	43	33	33	47	55	57	56	31	39	34	32	490
UK*	234	225	270	238	261	249	278	291	306	307	280	321	3.260
<b>Total</b>	<b>1.901</b>	<b>1.703</b>	<b>1.940</b>	<b>1.858</b>	<b>2.165</b>	<b>2.314</b>	<b>2.459</b>	<b>2.451</b>	<b>2.303</b>	<b>2.111</b>	<b>1.932</b>	<b>2.035</b>	<b>25.172</b>
<b>% by month</b>	<b>7,6%</b>	<b>6,8%</b>	<b>7,7%</b>	<b>7,4%</b>	<b>8,6%</b>	<b>9,2%</b>	<b>9,8%</b>	<b>9,7%</b>	<b>9,1%</b>	<b>8,4%</b>	<b>7,7%</b>	<b>8,1%</b>	<b>100,0%</b>

Source: CARE Database / EC

Date of query: 4-Aug 2005

\* Data 2002

\*\* Data 2001

\*\*\* Data 1998

**Table 51: Number of fatal accidents<sup>1</sup> by day of week per country, 2003**

	Mon	Tue	Wed	Thu	Fri	Sat	Sun	Total
BE**	170	174	186	178	205	243	222	1.378
DK	51	40	50	55	71	58	57	382
EL	199	168	188	192	205	188	260	1.400
ES	515	484	526	495	607	718	739	4.084
FR	665	638	660	658	813	877	857	5.168
IE	41	28	28	39	50	54	61	301
IT***	748	689	645	736	725	874	887	5.304
LU*	9	5	7	6	9	11	5	52
NL	138	114	121	112	161	159	135	940
AT	116	117	110	115	151	123	116	848
PT	156	143	155	162	177	202	224	1.219
FI	41	55	53	45	48	59	45	346
SE*	62	68	75	68	79	84	54	490
UK*	406	423	446	439	557	517	472	3.260
<b>EU 14</b>	<b>3.317</b>	<b>3.146</b>	<b>3.250</b>	<b>3.300</b>	<b>3.858</b>	<b>4.167</b>	<b>4.134</b>	<b>25.172</b>
<b>% by day</b>	<b>13,2%</b>	<b>12,5%</b>	<b>12,9%</b>	<b>13,1%</b>	<b>15,3%</b>	<b>16,6%</b>	<b>16,4%</b>	<b>100,0%</b>

Source: CARE Database / EC

Date of query: 3-aug-2005

\* Data 2002

\*\* Data 2001

\*\*\* Data 1998

<sup>1</sup> Note that numbers have not been corrected for 30 day definition for EL, ES, FR, IT and PT

**Table 52: Number of fatal accidents<sup>1</sup> by hour of day per country, 2003**

	0	1	2	3	4	5	6	7	8	9	10	11	12
BE**	49	58	58	49	40	49	49	51	49	38	61	40	49
DK	17	7	11	7	7	14	14	15	7	8	10	26	23
EL	51	46	47	42	60	53	58	65	47	49	48	45	43
ES	117	124	124	104	105	100	171	191	193	162	133	171	179
FR	145	148	131	112	158	191	169	208	234	180	207	205	200
IE	16	18	10	13	11	5	5	11	8	6	8	14	19
IT***	127	204	181	143	164	128	119	186	185	258	218	224	220
LU*	3	2	2	3	4	0	1	1	3	1	1	0	1
NL	22	23	19	18	14	23	26	50	41	29	53	41	42
AT	23	20	10	20	21	30	39	31	28	28	35	35	41
PT	52	39	29	28	32	29	40	59	46	31	41	59	48
FI	10	11	8	9	5	5	6	13	11	7	18	21	25
SE*	14	9	14	12	15	8	15	19	14	23	23	24	28
UK*	111	90	80	56	38	55	81	134	114	98	115	132	165
EU 14	757	799	724	616	674	690	793	1.034	980	918	971	1.037	1.083
% by hour	3,0%	3,2%	2,9%	2,4%	2,7%	2,7%	3,2%	4,1%	3,9%	3,6%	3,9%	4,1%	4,3%

	13	14	15	16	17	18	19	20	21	22	23	Total
BE**	51	58	59	81	78	87	85	70	50	60	55	1.378
DK	14	19	34	25	33	20	13	15	14	18	11	382
EL	51	67	73	77	68	75	77	62	68	71	57	1.400
ES	168	204	172	188	205	197	286	238	201	204	147	4.084
FR	207	271	327	320	363	375	261	238	193	161	164	5.168
IE	6	9	7	22	23	9	17	22	10	14	11	301
IT***	234	246	266	307	306	355	321	243	209	182	187	5.304
LU*	3	4	4	2	4	3	3	2	2	1	2	52
NL	39	61	79	60	81	55	35	34	32	36	27	940
AT	53	41	54	49	70	46	49	37	30	23	35	848
PT	54	68	57	56	75	97	87	64	52	42	34	1.219
FI	25	24	24	26	16	22	17	15	13	8	7	346
SE*	22	18	42	45	29	25	22	20	11	14	9	490
UK*	164	143	193	220	217	198	204	167	171	149	165	3.260
EU 14	1.091	1.233	1.391	1.478	1.568	1.564	1.477	1.227	1.056	983	911	25.172
% by hour	4,3%	4,9%	5,5%	5,9%	6,2%	6,2%	5,9%	4,9%	4,2%	3,9%	3,6%	100,0%

Source: CARE Database / EC

Date of query: 3-aug-2005

\* Data 2002

\*\* Data 2001

\*\*\* Data 1998

<sup>1</sup> Note that numbers have not been corrected for 30 day definition for EL, ES, FR, IT and PT



## 5.2 Type of area/road

**Table 53: Number of fatal accidents<sup>1</sup> by type of area and road per country, 2003**

	Inside urban areas	Outside urban area			Total
		Motorway	No motorway	Unknown	
BE**	426	172	780	0	1.378
DK	110	20	0	252	382
EL	679	56	189	476	1.400
ES	669	272	3.143	0	4.084
FR	1.496	337	3.335	0	5.168
IE	83	7	211	0	301
IT***	2.451	557	2.296	0	5.304
LU*	17	0	27	0	52
NL	335	129	476	0	940
AT	213	86	549	0	848
PT	542	93	584	0	1.219
FI	98	0	248	0	346
SE*	142	24	324	0	490
UK*	1.352	176	1.732	0	3.260
<b>EU 14</b>	<b>8.613</b>	<b>1.929</b>	<b>13.894</b>	<b>728</b>	<b>25.172</b>
<b>% by road type</b>	<b>34,2%</b>	<b>7,7%</b>	<b>55,2%</b>	<b>2,9%</b>	<b>100,0%</b>

Source: CARE Database / EC

Date of query: 3-aug-2005

\* Data 2002

\*\* Data 2001

\*\*\* Data 1998

<sup>1</sup> Note that numbers have not been corrected for 30 day definition for EL, ES, FR, IT and PT

### 5.3 Type of junction

**Table 54: Number of fatal accidents<sup>1</sup> by type of junction per country, 2003**

	Not at junction	At junction					Not defined	Total
		crossroad	level crossing	other junction	roundabout	t or y junction		
BE**	1.036	0	2	330	10	0	0	1.378
DK	269	56	1	8	2	46	0	382
EL	-	-	-	-	-	-	1.400	1.400
ES	3.503	226	0	73	49	233	0	4.084
FR	4.319	379	23	73	29	345	0	5.168
IE	0	15	0	5	4	39	238	301
IT***	4.133	629	3	495	44	0	0	5.304
LU*	45	5	0	0	0	2	0	52
NL	635	150	25	0	8	119	0	940
AT	474	97	25	0	0	30	222	848
PT	1.063	53	2	0	14	81	6	1.219
FI	266	9	0	71	0	0	0	346
SE*	328	57	6	8	5	82	4	490
UK*	2.051	209	0	240	61	699	0	3.260

Source: CARE Database / EC

Date of query: 3-aug-2005

\* Data 2002

\*\* Data 2001

\*\*\* Data 1998

<sup>1</sup> Note that numbers have not been corrected for 30 day definition for EL, ES, FR, IT and PT

## 5.4 Weather conditions

**Table 55: Number of fatal accidents<sup>1</sup> by weather conditions per country, 2003**

	dry	fog or mist	other	rain	snow, sleet, hail	strong wind	Total
BE**	1.090	10	9	230	16	4	1.378
DK	316	9	0	44	7	4	382
EL	1.174	5	38	165	7	11	1.400
ES	3.393	45	81	511	17	37	4.084
FR	4.472	80	56	485	48	27	5.168
IE	234	9	4	43	0	2	301
IT***	4.166	66	506	541	14	11	5.304
LU*	21	0	0	14	0	0	52
NL	835	15	0	67	7	3	940
AT	728	11	0	79	24	6	848
PT	994	17	0	202	2	2	1.219
FI	266	8	0	36	17	0	346
SE*	411	10	0	33	23	0	490
UK*	2.695	43	43	447	1	0	3.260
EU 14	20.795	328	737	2.897	183	107	25.172
% by wheather	82,6%	1,3%	2,9%	11,5%	0,7%	0,4%	100,0%

Source: CARE Database / EC

Date of query: 3-aug-2005

\* Data 2002

\*\* Data 2001

\*\*\* Data 1998

<sup>1</sup> Note that numbers have not been corrected for 30 day definition for EL, ES, FR, IT and PT

## 6 Glossary

The glossary provides short definitions for variables used in the Annual Statistical Report, and includes short definitions of CARE common values.

The CARE PLUS glossary has been derived from CARE PLUS definition grids which contain detailed information on each common value for each Member State.

The glossary has two components:

- a) A definition of the common value
- b) The availability of the common value in the data file for each Member State.

## ACCIDENT

### ACCIDENT

Definition: Occurs on a public road. Occurs on a private road to which the public has right of access (except BE, NL, PT). Involves at least one moving vehicle (except GB, NI, PT). Involves at least one injured or killed person. Is reported by the police. Self reporting possible (BE, GB, EL, IT, IE, NI). Self reporting not possible (DE, DK, FI, NL, AT, PT). Confirmed suicides excluded (BE, DE, GB, IE, NI, NL, AT, PT). Confirmed suicides included (DK, ES, IT, LU).

Note: The variation in the groups of road and the coverage of the injury categories included in injury accidents, together with differences in the level of self reported accidents, will lead to significant variations in the number of injury accidents reported, and their reporting rate, between Member States.

## TIME

### MONTH

Definition: Calendar month.

Data availability: All countries

### HOUR

Definition: Period of 60 minutes. Rounded down to whole hours (except EL, ES, IT : rounded to nearest hour).

Note: Winter time is:

- GMT from November to March (DE from 1996 onwards, GB, IE, NI, PT)
- GMT +1 hour from October to March (BE, DE, AT prior to 1996, DK, ES, FR, IT, LU, NL, SE)
- GMT +2 hours from October to March (EL, FI).

Summer time is one hour ahead of winter time :

- GMT +1 hour from April to October (DE from 1996 onwards, GB, IE, NI, PT)
- GMT +2 hours from April to September (BE, DE, AT prior to 1996, DK, ES, FR, IT, LU, NL, SE)
- GMT +3 hours from April to September (EL, FI).

For PT, unknown hour coded as '12' during daytime and '0' during night time

Data availability: All countries

### DAY OF WEEK

Definition: 24 hour day within 7 day week.

Note: Data calculated by the CARE system from the date of accident, where data is not available in national files (AT from 1992 onwards, BE, FR prior to 1993, PT, SE).

Data availability: All countries.

## PERSON CLASS

### **DRIVER**

Definition: Person driving or riding any motorised vehicle or pedal cycle. Person herding animals is not a driver (except BE, AT). Learner driver is a driver (except ES, PT). Learner driver is a driver during a driving test, but not in a driving lesson (DK). Driving instructor is not a driver (except ES, PT). Driving instructor is a driver during a driving lesson, but not during a driving test (DK).

Note: Uninjured drivers are included in the database (except GB, NI, NL : implicitly included in vehicle records only). Data on driving instructors and learner drivers collected separately from 1993 onwards (SE).

Data availability: All countries.

### **PASSENGER**

Definition: Person on or in a vehicle, who is not the driver. Includes person in the act of boarding or alighting from a vehicle (except DK). Learner driver is not a passenger (except ES, PT). Learner driver is a passenger during a driving lesson, but not during a driving test (DK). Driving instructor is a passenger (except ES, PT). Driving instructor is a passenger during a driving test, but not in a driving lesson (DK).

Note: Uninjured passengers not included in the database (except FR, IE, LU ; ES, FI, AT in some cases).

Data availability: All countries.

### **PEDESTRIAN**

Definition: Person on foot. Person pushing or holding bicycle (except DE). Person pushing a pram or pushchair. Person leading or herding an animal (except DE, AT). Person riding a toy cycle on the footway (except AT). Person on roller skates, skateboard or skis (except AT). Does not include person in the act of boarding or alighting from a vehicle (except DK, ES).

Note: Uninjured pedestrians not included in the database (except BE, IE, LU, NL implicitly included in element records; DE, DK, FR, FI, AT, SE if they caused the accident; ES not consistently).

Data availability: All countries.

## TYPE OF INJURY

### **INJURED**

Definition: Injured in a road accident. Hospitalisation or medical treatment not necessarily required (except FR). Self declaration of injury (DE if slight ; FI, GB, IE, IT, NI). Opinion of the police.

Data availability: All countries.

## FATALITIES

**Definition:** Death within 30 days of a road accident (UN/ECE Geneva 1995 – Statistics of Road Traffic Accidents in Europe and North America, annex 1). Corrective factors have been applied to comply with this international definition for the following countries: EL (24 hours), ES (24 hours in CARE; 24 hours before 1993 in publication), FR (6 days), IT (7 days), AT (3 days before 1992), PT (24 hours). Suicide not included (except DK, ES, FR). Natural death not included (except LU, SE).

**Data availability:** All countries.

Member State	Correcting factors		
Greece	$K(30) = K * 1.18$ up to 1995		
Spain	$K(30) = K * 1.3$ up to 1992		
	1993 up to 1996:	Outside urban area	Inside urban area
	Driver	$K(30)=K+SI*2.46\%$	$K(30)=K+SI*1.02\%$
	Passenger	$K(30)=K+SI*2.29\%$	$K(30)=K+SI*0.94\%$
	Pedestrian	$K(30)=K+SI*7.22\%$	$K(30)=K+SI*3.87\%$
	1997 up to 2000:	Outside urban area	Inside urban area
	Driver	$K(30)=K+SI*2.44\%$	$K(30)=K+SI*1.93\%$
	Passenger	$K(30)=K+SI*2.17\%$	$K(30)=K+SI*1.80\%$
	Pedestrian	$K(30)=K+SI*4.76\%$	$K(30)=K+SI*5.71\%$
	2001 up to 2004:	Outside urban area	Inside urban area
	Driver	$K(30)=K+SI*2.41\%$	$K(30)=K+SI*2.17\%$
	Passenger	$K(30)=K+SI*2.24\%$	$K(30)=K+SI*2.15\%$
Pedestrian	$K(30)=K+SI*6.17\%$	$K(30)=K+SI*4.34\%$	
France	$K(30) = K * 1.09$ up to 1993 $K(30) = K * 1.057$ from 1994 onwards		
Italy	$K(30) = K * 1.078$		
Austria	$K(30) = K * 1.12$ only for 1991		
Portugal	$K(30) = K * 1.3$ up to 1997 $K(30) = K * 1.14$ from 1998 onwards		
K: number of persons killed, SI: number of persons seriously injured			

## GENDER

### *FEMALE*

Definition: Determined by the police (except ES, IT, LU, AT, PT: on the basis of identity documents; DK, FI, SE : on the basis of personal id number).

Data availability: All countries.

### *MALE*

Definition: Determined by the police (except ES, IT, LU, AT, PT : on the basis of identity documents; DK, FI, SE : on the basis of personal id number).

Data availability: All countries.

## AGE

### *AGE*

Definition: Length of life of person. Rounded down to whole number of years (except EL, IT, NI : rounded to nearest year).

Note: Age 0 to 1 is exceptionally rounded up (FR, IT, IE, LU, NI, PT). Age over 99 only available for ES, FR (1993 on), NL.

Data availability: All countries (except DE).

## AREA TYPE

### *INSIDE URBAN AREA*

Definition: Area inside urban area boundary signs (except IE, UK). Includes dual carriageways and national roads. Can include motorways (except DE, DK, EL, IT). Opinion of the police (DK, SE).

Note: Data approximated from speed limit of 40 mph or less (IE, UK).

Data availability: All countries.

### *OUTSIDE URBAN AREA*

Definition: Area outside urban area boundary signs. Opinion of the police (DK, SE). Includes motorways.

Note: Data approximated from speed limit of over 40 mph (IE, UK).

Data availability: All countries.



## **MOTORWAY**

Definition: Public road with dual carriageways, and at least two lanes each way. Entrance and exit signposted. Road with grade separated interchanges. Road with a central barrier or central reservation. No crossing permitted. No stopping permitted unless in an emergency. Entry prohibited for pedestrians, animals, pedal cycles, mopeds, agricultural vehicles ; learner drivers (BE, EL, IE, PT, UK). Access restricted to motor vehicles (DK, FI, AT). Minimum speed between 50 km/h and 80 km/h (except FR, UK). Maximum speed between 100 km/h and 130 km/h (except DE recommended 130 km/h).

Data availability: All countries.

## **MODES OF TRANSPORT - VEHICLE GROUP**

### **AGRICULTURAL TRACTOR**

Definition: Motor vehicle for agricultural use, with wheels or caterpillar tracks, with at least two axles. Driving licence required (DK, EL, ES, FI, GB, IT, IE, LU, AT; not in FR). Maximum speed 30 km/h or 40 km/h.

Data availability: All countries (except DK, AT prior to 1997, FR, GB, IE from 1996 onwards, LU).

Value included in another value: agricultural machine (FR), construction or agricultural machine (DK, AT prior to 1997), agricultural or industrial tractor (LU), other motor vehicle (GB), other (IE from 1996 onwards).

### **BUS, MORE THAN 8 SEATS**

Definition: Motor vehicle with at least four wheels, used for transporting people. Public or private use. Type D driving licence required. Seating for more than 8 passengers. Includes minibus, trolley-bus (except LU), scheduled bus, unscheduled bus, school bus.

Data availability: All countries.

### **CAR OR TAXI**

Definition: Includes car, taxi. Motor vehicle with four wheels. Used to transport only or mainly people. Seating for no more than 8 passengers. Type B driving licence required. Includes taxi-bus (NL).

Data availability: All countries.

## **HEAVY GOODS VEHICLE**

Definition: Motor vehicle with at least four wheels, with a permissible gross vehicle weight of over 3.5 tonnes, used only for the transport of goods. With or without a trailer. Type C driving licence required. Includes lorry, over 3.5 tonnes ; road tractor ; road tractor with semi-trailer ; lorry with trailer ; tanker (except FI).

Note: Lorries cannot systematically be categorised as over 3.5 tonnes (DE, IT).

Data availability: All countries (except DE, IT).

## **LORRY, LESS THAN 3.5 TONNES**

Definition: Motor vehicle with a permissible gross vehicle weight of less than 3.5 tonnes, used only for the transport of goods. Type B driving licence required.

Note: Lorries cannot systematically be categorised as less than 3.5 tonnes (DE, IT).

Data availability: All countries (except DE, IT, LU).

## **MOPED**

Definition: Motor vehicle with two wheels, with an engine size of less than 50 cc. Design speed between 25 km/h and 50 km/h. One or two seats. Minimum age for driver between 14 and 18 (except IE). No driving licence required (ES, FR, FI, GB, IT, PT, SE). Unregistered vehicle (BE, DE, DK, ES, FR, SE).

Data availability: All countries (except IE from 1996 onwards).

Value included in another value: Two wheeled motor vehicle (IE from 1996 onwards).

## **MOTOR CYCLE**

Definition: Motor vehicle with two or three wheels (not three wheeled in DE), with an engine size of more than 50 cc. With a trailer possible (except DK). With a sidecar possible. Registered vehicle (except PT). Type A driving licence required. Includes motor scooter (except FR).

Data availability: All countries (except IE from 1996 onwards).

Value included in another value: two wheeled motor vehicle (IE from 1996 onwards).

## **OTHER VEHICLE**

Definition: Includes other non-motor vehicle, other motor vehicle.

Data availability: ES, FR, GB, IE, LU, NI, AT, PT.

## **PEDAL CYCLE**

Definition: Vehicle with at least two wheels, without engine, moved by pedals or hand cranks. With or without a trailer. With or without passengers. Ridden in the carriageway. Ridden on the pavement (except DK, LU).

Data availability: All countries.

## **PEDESTRIAN**

Definition: Person on foot. Person pushing or holding bicycle (except DE). Person pushing a pram or pushchair. Person leading or herding an animal (except DE, AT). Person riding a toy cycle on the footway (except AT). Person on roller skates, skateboard or skis (except AT). Does not include person in the act of boarding or alighting from a vehicle (except DK, ES).

Note: Uninjured pedestrians not included in the database (except BE, IE, LU, NL implicitly included in element records; DE, DK, FR, FI, AT, SE if they caused the accident; ES not consistently).

Data availability: All countries.

## **JUNCTION TYPE**

### ***JUNCTION***

Definition: Road intersection with three or more arms. Not grade separated. Includes t junction, y junction, crossroad, level crossing (except DK, FI, GB, NI), roundabout (except FR), multiple junction.

Data availability: All countries (except EL).

### ***CROSSROAD***

Definition: Road intersection with four arms. Opinion of the police (DE, DK, ES, FI ; not AT).

Data availability: All countries (except B, EL).

### ***NOT AT A JUNCTION***

Definition: Position on road more than 20m from a junction or roundabout (GB, IE, NI, NL, AT). Position on road more than 50m from a junction (FR). Opinion of the police (BE, DE, DK, ES, FI, IT, LU, SE).

Data availability: All countries (except EL).

### ***ROUNDAABOUT***

Definition: Circular highway. Includes sections of the road leading into it, within 20m (GB, IE, NI, AT). Opinion of the police (DK, ES, FR, IT).

Data availability: All countries (except BE, DE, EL, FI, LU, PT).

### ***T OR Y JUNCTION***

Definition: Road intersection with three arms. Includes t junction, y junction, staggered junction.

Data availability: All countries (except BE, EL, FI, IT, PT).

## 7 List of tables and figures

Table 1: Annual number of injury accidents per country .....	10
Table 2: Annual number of fatalities per country.....	11
Table 3: Annual number of fatal accidents per country.....	13
Table 4: Annual number of pedestrian fatalities per country.....	14
Table 5: Annual number of pedal cyclist fatalities per country (includes all riders and passengers of pedal cycles).....	14
Table 6: Annual number of moped rider&passenger fatalities per country .....	15
Table 7: Annual number of motorcycle rider&passenger fatalities per country.....	15
Table 8: Annual number of fatalities in accidents involving cars or taxis (Attention: fatalities .....	16
Table 9: Annual number of fatalities in accidents involving heavy goods vehicles or lorries <3,5t.....	17
Table 10: Annual number of fatalities per country in accidents involving buses (Attention: fatalities .....	17
Table 11a: Annual number of fatalities by age band per country: 1994-1999 .....	19
Table 11b: Annual number of fatalities by age band per country: 2000-2003 .....	20
Table 12: Annual number of female fatalities per country.....	21
Table 13: Annual number of male fatalities per country.....	22
Table 14: Annual number of female fatalities per country, drivers .....	23
Table 15: Annual number of male fatalities per country, drivers .....	23
Table 16: Annual number of female fatalities per country, passengers .....	24
Table 17: Annual number of male fatalities per country, passengers .....	24
Table 18: Annual number of female fatalities per country, pedestrians .....	25
Table 19: Annual number of male fatalities per country, pedestrians .....	25
Table 20: Number of total fatalities by age per country 2003.....	26
Table 21: Number of female fatalities by age per country 2003.....	26
Table 22: Number of male fatalities by age per country 2003.....	27
Table 23a: Number of fatalities aged 0 to 15 by mode of transport (in which the fatality was travelling) per country, 2003.....	27
Table 23b: Number of fatalities aged 16 to 24 by mode of transport (in which the fatality was travelling) per country, 2003.....	28
Table 23c: Number of fatalities aged 25 to 64 by mode of transport (in which the fatality was travelling) per country, 2003.....	28
Table 23d: Number of fatalities aged 65+ by group of vehicle (in which the fatality was travelling) per country, 2003.....	29
Table 24: Number of pedestrian fatalities by age per country, 2003 .....	30
Table 25: Number of pedal cyclist fatalities by age per country, 2003.....	30
Table 26: Number of moped and motorcycle rider fatalities by age per country, 2003 .....	31
Table 27: Number of moped and motorcycle passenger fatalities by age per country, 2003 .....	31
Table 28: Number of car and taxi driver fatalities by age per country, 2003.....	32
Table 29: Number of car and taxi passenger fatalities by age per country, 2003.....	32
Table 30: Number of fatalities in heavy goods vehicles and lorries < 3,5t by age per country, 2003.....	33
Table 31: Number of fatalities in buses by age per country, 2003.....	33
Table 32: Number of fatalities by person class and age band per country, 2003.....	34
Table 33: Number of fatalities by mode of transport (in which the fatality was travelling) and type of area per country,2003.....	35
Table 34: Number of fatalities by month per country, 2003 .....	36
Table 35: Number of total fatalities by day of week per country 2003 .....	37
Table 35a: Number of fatalities by day of week per country 2003, drivers .....	37
Table 35b: Number of fatalities by day of week per country 2003, passengers .....	38
Table 35c: Number of fatalities by day of week per country 2003, pedestrians.....	38
Table 36: Number of fatalities by hour of day per country, 2003 .....	39
Table 37: Number of pedestrian fatalities by hour of day per country, 2003 .....	41
Table 38: Number of fatalities by type of area and road per country, 2003 .....	42
Table 39: Number of pedestrian fatalities by type of road and area per country, 2003 .....	43
Table 40: Number of fatalities by type of junction per country, 2003 .....	44
Table 41: Number of pedestrian fatalities by type of junction per country, 2003 .....	44
Table 42: Number of fatalities by weather conditions per country, 2003 .....	45
Table 43: Number of fatal accidents by month per country, 2003.....	46
Table 44: Number of fatal accidents <sup>1</sup> by day of week per country, 2003.....	46

Table 45: Number of fatal accidents by hour of day per country, 2003 .....	47
Table 46: Number of fatal accidents by type of area and road per country, 2003 .....	48
Table 47: Number of fatal accidents by type of junction per country, 2003 .....	49
Table 48: Number of fatal accidents by weather conditions per country, 2003 .....	50
Figure 1: Annual number of fatalities, injury accidents and injured people (EU-25) .....	6
Figure 2: Fatality rate per million population, Evolution 1994-2003 (EU-25) .....	6
Figure 3: Children (aged 0 to 14years) fatality rate per million children population 2003.....	7
Figure 4: Number of fatalities by area type, 2003 .....	8
Figure 5a: Distribution of male fatalities by person class, 2003* .....	8
Figure 5b: Distribution of female fatalities by person class, 2003 .....	9
Figure 6: Distribution of fatalities by mode of transport, 2003* .....	9
Figure 7a: Injury accidents per country (BE – IT) 1994-2003 .....	10
Figure 7b: Injury accidents per country (LU-UK) 1994-2003.....	11
Figure 8a: Annual number of fatalities per country (BE-IT).....	12
Figure 8b: Annual number of fatalities per country (LU-UK) .....	12
Figure 9: Number of fatalities and injury accidents per country in 2003 as proportion .....	13
Figure 10: Annual number of fatalities by mode of transport (in which the fatality was travelling), EU-14 ...	16
Figure 11: Annual number of fatalities involving different modes of transport (Attention: fatalities in specific mode of transport plus all opponents), EU-14.....	18
Figure 12: Annual number of fatalities by year by age, EU-14: 1994 and 2003 .....	21
Figure 13: Annual distribution of fatalities by gender, EU-14: 1994 and 2003.....	22
Figure 14: Number of fatalities by month EU14, 2003 .....	36
Figure 15: Number of fatalities by hour of day EU14: 1994 and 2003.....	40
Figure 16: Number of pedestrian fatalities by hour of day, EU 14: 1994 and 2003* .....	42
Figure 17: Number of pedestrian fatalities by type of road and area per country, 2003.....	43